

"the gospel is bearing fruit and growing throughout the whole world—just as it has been doing among you."



20<sup>th</sup> Annual Meeting

# DELEGATE HANDBOOK



Pacific Northwest  
Mennonite  
Conference

An area conference of Mennonite Church USA

# Table of Contents

<b>Welcome to Kalispell 2014 .....</b>	<b>3</b>
<b>Report from Executive Conference Minister.....</b>	<b>4</b>
<b>PNMC Delegates: Who They Are &amp; What They Do .....</b>	<b>5</b>
<b>2014 Open Space Conversations .....</b>	<b>7</b>
<b>2013 PNMC Delegate Session Minutes.....</b>	<b>8</b>
<b>2013 PNMC God-Sightings .....</b>	<b>12</b>
<b>Table Group Covenant.....</b>	<b>15</b>
<b>Treasurer's Report / Financial Reports .....</b>	<b>16</b>
<b>PNMC Ballot.....</b>	<b>24</b>
<b>TEAM / MINISTRY REPORTS.....</b>	<b>26</b>
NW Mexico Report .....	26
Pastoral Leadership Team .....	27
PNMC Historian's Report .....	28
<b>PNMC AREA ORGANIZATIONS &amp; SCHOOL REPORTS .....</b>	<b>29</b>
Drift Creek Camp .....	29
Mennonite Village .....	30
West Coast Mennonite Central Committee .....	31
Western Mennonite School.....	32
<b>COLLEGE &amp; UNIVERSITY REPORTS .....</b>	<b>33</b>
AMBS .....	34
Bethel College.....	35
Bluffton University.....	36
Eastern Mennonite Seminary .....	37
Eastern Mennonite University.....	38
Goshen College.....	39
Hesston College .....	40
<b>NATIONAL ORGANIZATION REPORTS .....</b>	<b>41</b>
Everence .....	42
MennoMedia .....	44
Mennonite Church USA .....	45
Mennonite Disaster Service (MDS).....	46
Mennonite Education Agency (MEA) .....	47
Mennonite Men.....	48
Mennonite Mission Network (MMN) .....	49
<b>PNMC Vision, Mission Statement, Address &amp; Website .....</b>	<b>51</b>

## Welcome to Kalispell, 2014

Dear Delegate,

It is my honor and privilege to welcome you to the 2014 annual session of the Pacific Northwest Mennonite Conference (PNMC) in Kalispell, MT, June 20-21. In welcoming you I do so from two very special viewpoints:

First, I welcome you as moderator of PNMC. As chairperson of the board and convener of delegates, I eagerly look forward to being with you in this way again. We gather as delegates and as a worshipping, learning and discerning community. What an opportunity it is for us to deepen relationships with one another and to grow in our commitment to journey together as followers of Jesus. Our theme from Colossians 1 this year expresses well my sense that ***“the gospel is bearing fruit and growing throughout the whole world—just as it has been doing among you.”*** In coming together we will share our journeys with one another and grow toward the future.

Secondly, I welcome you as pastor of the host congregation, Mountain View Mennonite Church. For months our local arrangements committee has been anticipating your arrival and excitedly imagining what it will be like to have you visit. Your presence is a gift to our congregation which often feels like we exist on the fringes of the Mennonite world. We are looking forward to getting to know those of you we haven't met before and to give all of you some view of our context in this lovely valley. Bring the whole family. Take some additional days to hike or in other ways enjoy our beautiful natural setting.

This delegate book attempts to tell us about the many activities and ministries of PNMC and the larger Mennonite Church. I am thankful to our staff and other leaders who have worked to bring us this report. I hope you take time to read it and to become familiar with the many different ways we work together.

Yet the heart of the wider church is each local worshipping and serving congregation. The numerous wonders that take place in our congregations are not included in this little booklet. It would take too much space to attempt such a thing. But each one of us is a bearer of those stories – stories we hope to share and hear when we come together. Let us gather in joyful expectation of how God will use this time to increase our faith and faithfulness as we walk into the future.

Welcome!

Jeryl Hollinger,  
Moderator, PNMC

# Report from Executive Conference Minister

*Submitted by Katherine Jameson Pitts*

*“We always thank God, the Father of our Lord Jesus Christ, when we pray for you, because we have heard of your faith in Christ Jesus and of the love you have for all the saints – the faith and love that spring from the hope that is stored up for you in heaven and that you have already heard about in the world of truth, the gospel that has come to you. All over the world this gospel is bearing fruit and growing, just as it has been doing among you since the day you heard it and understood God’s grace in all its truth.” Col 1:3-6 (NIV)*

I thank our God as I pray for each of the congregations that make up the Pacific Northwest Mennonite Conference. In a time when our culture is increasingly polarized and conversations often become conflicts, the love for the brothers and sisters that I experience as I travel throughout PNMC fills me with gratitude.

I often wish you all could travel with me and learn to know each of our 36 congregations more fully. For while we are scattered across many miles and have many differences in how we express our faith in the gospel, there is a web of connection – spun out of prayer, mutual aid, common testimony, joint ministry, and relationships that connects us. And the Spirit is alive in those connection bringing life and growth to us all.

A few connections of note in the past year:

The generosity of Eugene Mennonite Church has enabled the start of the Seed Northwest Grant Program as a way for us to encourage and share in each other’s mission. The team, Angela Boss, Joseph Penner, Rick Troyer, and I, have begun reviewing applications and are excited to share these proposals among us.

Our District Pastors continue to encourage and connect with congregations in meaningful ways. There was significant turnover among District Pastors this year. Lynn Miller, Duane Oesch, and George Leppert were among the original District Pastors for PNMC and we will miss their wisdom as they retire from this ministry. Charlene Epp’s contribution will also be missed as she relocates out of the area. Rose Marie Zook Barber, Bob Buxman, Tim Gascho, Renee Johns, and Victor Vargas have assumed new responsibilities as District Pastors

After the calling of a number of pastors to PNMC congregations last summer and fall, Seattle is the only PNMC church in the midst of an active pastoral transition. We welcome Mathew Swora as pastor at Zion, and Angel Campo as pastor at Jerusalén.

It was disappointing to have several winter gatherings cancelled due to snow and ice, but I look forward to connecting with you at Kalispell and in the coming year. The gospel is at work in us and in our world. I delight in hearing your stories and in together looking for ways we can connect with what the gospel is doing in and around us.

In faith, love and hope,

Katherine Jameson Pitts  
Executive Conference Minister

# **Pacific Northwest Mennonite Conference**

## **DELEGATES: WHO THEY ARE AND WHAT THEY DO**

*(March 2013)*

### **WHO IS THE PNMC DELEGATE BODY?**

1. Each PNMC member congregation is entitled to one delegate for each twenty-five of its members, or fraction thereof. (PNMC bylaws, Article III,3,g)
2. All ordained or licensed ministers, whose ministerial credentials have been recognized by PNMC and who are considered active, with charge are entitled to be delegates. (PNMC bylaws, Article III,3,g)

### **WHO SHOULD CONGREGATIONS CHOOSE TO BE THEIR DELEGATES?**

1. Congregations have the freedom to choose who will best represent their congregation in the PNMC delegate body.
2. Delegates should be members of the congregation they represent. Preferably, some of a congregation's delegates will bring a congregational leadership perspective having continuity with the congregation, understanding the range of views in the congregation and their own views respected within their congregation.
3. Delegates should hold to the vision and commitments of PNMC (Bylaws Article III,2):
  - a. The vision and mission statements of Mennonite Church USA and PNMC
  - b. Common Confession of Faith in a Mennonite Perspective, as updated from time to time, as their “statement of faith for teaching and nurture in the life of the Church”
  - c. Commitment “to seek to understand and interpret Scripture in harmony with Jesus Christ as we are led by the Holy Spirit in the Church”
  - d. Commitment to participate in discerning and living out statements of Christian faith and life made by Mennonite Church USA and PNMC
  - e. Commitment to participate in the life and mission of PNMC and Mennonite Church USA through delegate representation and financial support.

### **WHAT DO DELEGATES DO?**

1. **Fulfill the role as defined in the PNMC bylaws:** (Article IV,2):

**Purpose.** Delegates appointed by the Member Congregations have the authority to transact the business of PNMC, including but not limited to the following actions:

- a. Discuss and decide major issues of policy for PNMC, and discern the voice of the Spirit in the midst of the Member Meeting.
- b. Provide opportunity to speak to the establishment of general policies and the development of programs to carry out those policies.
- c. Receive reports from the Board, PNMC staff, teams and other conference activities. Reports shall be presented in writing and shall include financial accounting.
- d. Elect the following as needed:
  - (1) Moderator Elect.
  - (2) Board members to fill new terms and vacancies.

## **WHAT DO DELEGATES DO?, CONTINUED**

- (3) Secretary and Treasurer.
- (4) Gift Discernment Team members. This team identifies and recommends persons to the Board to fill elected positions which need to be affirmed by the delegates at the annual Member Meeting. “

*(There may also be other elections as deemed necessary by the Board of Directors.)*

### **2. Gathered Discernment:**

PNMC is comprised solely of Mennonite congregations in the Pacific Northwest. These congregations meet in annual assembly the fourth weekend of June. The delegate body assembly is a forum for these congregations to talk together and to discern together the voice of the Holy Spirit. This forum helps the church move beyond its usual congregational ways of thinking and acting. Discernment happens as delegates together dwell in the Word, meditate, pray, share, discuss and listen to one another. The value of this discernment is not realized primarily in formal actions. It is realized in the worship and dialogue itself as it informs, inspires and builds up our conference, denominational and congregational life.

**3. Communication channel:** It is our intent that delegates help the conference stay focused on the value of PNMC to congregational life: 1. guiding through pastoral transitions; 2. helping plan for the future; 3. resourcing lay leaders; and 4. strengthening the ministry of pastors. This is accomplished by:

- a. Delegates represent their congregation's voice into the PNMC body. They receive PNMC staff and board reports and interact with the board and staff to provide counsel and direction.
- b. Delegates represent the PNMC body to their home congregations by relaying annual delegate session discussions.
- c. Throughout their term as delegate each provides a primary interaction service between PNMC staff and board and their home congregation. They may be sought for counsel or communication between the annual delegate sessions via email or snail mail.
- d. One congregational delegate shall serve on the Conference Communications Council.

## **THE DELEGATES' TERM OF SERVICE**

In the fall of each year, the PNMC office will request from each congregation a list of its delegates. One of the delegates should represent the congregation, along with a pastor, at the winter Communications Council meeting. We hope that all the delegates shall represent the congregation at the summer annual assembly. Delegates shall serve in that role until a different list of delegates is requested the following fall.

## 2014 Open Space Conversations

On Saturday afternoon, June 21, we are going to try something new. A variety of topics for conversation will be offered. Each conversation will be hosted by a leader who has some interest or experience with the topic. The host's role will be to clarify the topic, share from their own experience, and invite others into the conversation. Even though not every conversation will have an overt link to our assembly's focus, those interested in leading a conversation should keep this year's theme in mind: "The gospel has been bearing fruit and growing throughout the whole world -- just as it has been doing among you." (*Colossians 1:6*)

At the beginning of the Open Space Conversation session, the whole assembly will meet to hear 60 second descriptions from each respective conversation host clarifying "what they'd like to dialogue about." Once all the hosts have offered their descriptions, people will choose which conversation they'd like to attend. Some conversations may have a bunch of interested people, others possibly none. This shouldn't be seen as insulting or personal instead; it should be seen as simply what this particular gathering is interested in discussing. If it turns out that you pitched a conversation to which no one comes, join another and enjoy the dialogue from another perspective.

We are adapting this Open Space Conversation process from that used by the Illinois Mennonite Conference. It's an approach that in their experience is characterized by openness, commitment to listening, healthy room for dialogue and the exchange of experiences in an informal yet inspiring atmosphere.

On average, the conversations last about an hour. If you need more time you can arrange to continue the conversation over dinner. Each conversation should have a recorder (preferably someone who has a laptop) who can deliver a written document back to PNMC following the discussion. Some reports will simply describe what the presenter shared. Others may offer a new vision out of the dialogue!

If the Spirit is nudging you to bring an idea for discussion, you will be given the opportunity to offer your "pitch" and see who else might want to join you for the discussion you're suggesting. Please let Katherine Pitts or Jeryl Hollinger know if you are have a conversation you'd like to host.

# 2013 PNMC Delegate Session Minutes

PNMC Annual Delegate Session – June 21-22, 2013  
Warner Pacific University, Portland, OR

## Session #1 – Friday, June 21

### **1. Gathering** Jeryl Hollinger

Steve Kimes welcomed the group to Portland.

Otoniel Soto, a guest from Mexico, shared a meditation on Acts 2:1-11.

Table Discussion: *“What is God saying through this scripture to our witness, and how is this happening in your congregation?”*

Rick Troyer shared about the Mexico passion-based ministry.

Jeryl led guided prayer.

### **2. Roll call of congregations** Jennifer Delanty (see attached document)

As the names of congregations were called, the delegates from that congregation stood shared three sentences:

- (1) – One example of a “God-sighting” in your congregation.
- (2) – One challenge you are facing in your congregation
- (3) – How you are addressing the challenge.

**Absent:** Vida Nueva, Filer, First Mennonite Church-Aberdeen, Fusion Faith Center, Peace Community, Springwater,

### **3. Welcome of visitors** Nancy Kauffman, Denominational Minister

Iris de León-Hartshorn; Mark Regier-Everence; Carlos Romero – MEA; Tim Lichti-Hesston; Stanley Green- MMN; Steve Wiebe-Johnson and Marlene Kroeker-MMN; Ken Hawkey – AMBS; Charlotte Derksen – MennoMedia and Resource Advocate for PNMC

Joe Blowers – Brethren Mennonite Council; Nindyo Sasongko – Indonesian Mennonite Church; Bob Buxman – WC MCC - GAP

### **4. Introduction to delegate sessions** Jeryl Hollinger

- a- feedback on delegate role
- b- how can PNMC do a better job of helping congregations be healthy

### **5. Review and approve 2012 Moses Lake delegate session minutes**

The minutes of the 2012 Moses Lake delegate session minutes were approved as written in the delegate booklet.

### **6. Introduction of ballot** Jennifer Delanty

Jennifer presented the ballot, which will be affirmed and turned in tomorrow.

### **7. Executive Conference Minister report** Katherine Pitts

See delegate book for written report.

--Katherine tried to visit as many churches as possible this past year. She sees God working and present in the wide variety of congregations.

--Katherine expressed appreciation for District Pastors who help keep her in contact with this widespread conference.

-- Katherine requested prayer for four congregations who are searching for a pastor.

### **8. The role of delegates** (table discussion-summary attached)

The board wants to hear from delegates about the role of delegates and to what extent this paper reflects that role.

The board is proposing a year-round delegate body.



## OPEN MIC COMMENTS

- Table 3 – Expressed appreciation and support for year-round delegates and hopes this system will be used well. Suggestion to use phone as well.
- TABLE 14 – Responding to the board via email isn't very helpful; helpful suggestions: video conversations via Skype, explaining role expectations to new delegates, having a new delegate breakfast before the first delegate session.
- TABLE 8 – Affirms year-round ministry of delegates. Suggestion: enhance the job description of expectation to carry information back to congregations.
- TABLE 4 – This is a good framing for new delegates, but doesn't really address what we've done thus far. Suggestion: To build affinity groups for discussion.
- TABLE 7 – Sharing beyond this group to congregations would be helpful. Suggestions: more worship time, not just business; paper contact for those who aren't tech savvy or don't have technology available.
- TABLE 5 – affirms year-long delegates. Encourage new delegates, not just recycle.
- TABLE 1 – One year term may be too short.
- OVERALL – support for having year-round delegates

### 9. Announcements and Lunch

### 10. Ten seminars were held in the afternoon with topics and leaders:

- a. Pat Shaver and Rose Marie Zook Barber – *“Praying with our Imagination”*
- b. Rachel Ringenberg Miller – *“12 Scripture Project”*
- c. Otoniel Soto, Mexico – *“The Life and Ministry of the NW MEXICO churches”*
- d. Peter Lumsdaine – *“Christian discipleship, effective peacemaking & deep Creation care in a time of global crisis”*
- e. John David Thacker - *“Sunday Storytelling”*
- f. Matthew Yoder - *“Rural Church”*
- g. Meg Lumsdaine – *“Sacred Awareness: Reclaiming Wonder for God's Holy Seasons”*
- h. Mark Regier – Everence – *“Funding Mission Together”*
- i. Steve Kimes – Anawim – *“Turning Church Property Upside Down”*
- j. Gary Jewell – Jan Yoder – *“Sexuality”*

## Session #2 – Saturday, June 22

### 1. Gathering Jeryl called the group to order

Jennifer Sottolano led in music.

Jennifer Delanty led the contemplation of Rev. 7:9-17

### 2. Moderator Report & Discussion on the work of PNMC Jeryl

Introduction of board members – described as a team: Jennifer Delanty, Harold Nussbaum, Wanda Dorsing-absent, Jerry Barkman, Eva Mendez, Joseph Penner, Jennifer Sottolano, Jack Swaim

- Jeryl talked of his “other life” as a Bee-Keeper and gardener and drew a parallel to conference work. Just as he cannot tell the bees how to have healthy hives, but can provide things they need to do their work, he cannot tell each congregation what to do to be healthy, but can do things to support their work.
- Some things the board and staff have worked at doing:  
Asked congregations how to help them be healthy; helped congregations in pastoral transitions; equip lay leaders; provide communication via e-bulletin & *Evangel*; support and encourage pastors; offer DP relationships; connect congregations to resources for thinking about and planning for their future; fiscal responsibility; align PNMC documents; property management team for Peace Mennonite; encourage Katherine in her work; discern how to relate to non-traditional churches; Annual Meeting; CCC; support church-wide relationships (CLC, Phoenix); fill Bethel College board

position; be a resource for congregational life when problems, questions, issues arise; use of technology to connect spread out conference.

### **OPEN MIC COMMENTS - TABLE 3**

Affirm Katherine for her work in getting around to all the churches. Appreciate work of District Pastors. Congregations need a better understanding of the role of DP's. Looking forward to how equipping will happen for lay leaders. Suggestion: Lay leaders work in clusters, gather periodically for retreat.

### **3. Acceptance of Ballot**

Motion for acceptance of ballot as written, M/S/C.

The Gifts Discernment team would appreciate any recommendations for future ballots.

### **BREAK**

### **4. Conference Finances** Harold Nussbaum

- Linda Dibble, Albany, OR shared that PNMC received a financial gift from the Clarence & Ruth Reeser estate. She encouraged others to remember PNMC in estate planning and that it is possible to contribute to endowment accounts that are already established.
- The board requested a 7% increase in giving from congregations for the 2013 budget. A number of congregations responded positively.
- Joseph Penner shared a proposal for disbursement of the Eugene gift to the conference. Proposal: The money would be available to developing or emerging congregations who submit an application for funding a new project. The grants offered would need to be matched by another congregation. Possible names for the project: Seeds Northwest, PNMC Seed Bank

### **OPEN MIC COMMENTS**

Steve W-J related that Mountain States had a similar program and the importance to allow freedom to fail. New initiatives don't need to be successful.

Response: You are free to fail, but we hope you don't. The intent of the application process is to stimulate thinking, not to monitor or compare projects. Applications will likely be reviewed by a screening committee to help people refine their proposals, not to decide the merits of each application. The application form will be on the web.

John Colvin asks if there is a format or diagram to help a church initiate a business that would benefit members of the congregation and the PNMC? Response: We don't have a program for that. Non-profit organization rules need to be followed.

Lynn Miller expressed enthusiasm for the possibility of matching money and the potential for it to bring conference closer to the churches.

Miriam Hooley shared that River of Life in Sweet Home benefited from the revolving loan fund and expressed appreciation to the Eugene Congregation for the gift.

Victor Fuentes shared that Iglesia Pentecostés is in process of constructing a church. Can we count on you to collaborate with us in our project? I have faith that you can collaborate with us.

Rose Marie Zook Barber remembers that PNMC gave the Eugene congregation a lot of money.

### **5. Recognition/Commissioning Prayer**

Elizabeth Soto Albrecht, next MC-USA moderator, will be coming to Oregon in July.

- July 12– 7 PM Iglesia Menonita Pentecostés – Woodburn
- July 13 – CIHAN – Ministerios Restauración – Portland – 5 PM
- July 14 – Lebanon Mennonite Church

Dates ahead and congregations celebrating anniversaries

- Sept. 27 – 29, 2013 – Mountain View, Montana – 100 years
- July 19-20, 2014 – Filer, Idaho 100 years
- Prince of Peace-Anchorage – 25 years
- Pastor/Spouse retreat – Oct 20-22, 2013 at Menucha
- Feb 8, 2014 – Conference Communication Council – Portland area
- Thanks to those who made this meeting possible – Audrey Lowen, Brett Tieszen, local committee, Rose Marie Zook Barber – worship services, Denny “Pablo” Gradin – Wendell Amstutz – translation
- P & J Coordinating ministry – revive – meet for dinner
- Welcome to worship at local churches and times were shared

#### **6. Invitation to Kalispell 2014**

Cathy Brenneman invited us to Kalispell, MT June 20-21, 2014 with a poem.

#### **7. Evaluation**

Please complete evaluation forms to assist with Annual Meeting planning.

**8. Closing** Nancy Kauffmann brought the meeting to a close in prayer.

**Submitted by: Barb Buxman**

## PNMC God-sightings and Challenges Reports, 2013

Give:

1. One **example** of a “God-sighting” in your congregation
2. One **challenge** you are facing in your congregation
3. How you are **addressing** the challenge

Albany

1. Discovering and using gifts,
2. Attending to the needs of older members of the congregation as well as new members,
3. Empower people who have been there a long time to feed others.

Anawim

1. Cooperating with churches of other cultures
2. Ministry to the poorest in Portland.

Bend:

2. Traditional church model doesn't fit them,
3. Rethinking the model of the church has led to a new style of leadership.

Calvary

1. Working with Roca de Salvación,
2. Building relationships.

Centro Cristiano Pentacostés

1. Growing fast,
2. Training leaders,
3. Serious prayer.

Comunidad Cristiana de Vida Nueva

Corvallis

1. Weekly potluck strengthens
2. Small number of youth

Emmaus – building, challenge courage

Eugene

1. After 47 years with only one person dying in the congregation, three people have died in the past year and a half, the most recent one who was our pianist.
2. People in the congregation are realizing that something needs to change and are ready to start thinking and dreaming about what comes next for us as a congregation.
3. At the same time, we were able to claim who God has called us to be and start to live into that calling,

Evergreen Heights

1. Gifts discernment
2. Children growing up
3. Helping kids discover and use their gifts

### **Evergreen**

1. Congolese visitors and youth taking a strong role,
2. Competing activities in youths' busy schedules
3. Quarterly retreats for youth and mentors.

### **Filer**

### **First Mennonite McMinnville**

2. Anglo congregation – 12 members, average age 74

### **Hyde Park**

1. Youth planned worship service, the vulnerability shared by the youth who preached
2. How to group Christian Ed when there are wide spans between the children's ages.

### **Iglesia Cristiana Roca de Salvación**

2. Two cultures
3. Fasting and prayer

### **Iglesia Mennonita Pentecostés**

1. New people from California
2. Immigration

### **International Bethel City Church**

1. Members of the congregation including the youth are participating more in the church leadership.
2. We are facing financial challenges because we are a small congregation and everyone does not work to give their tithes and offerings to the church
3. We are addressing the challenges by one praying for our members to be blessed with jobs, especially those who are students, and two encouraging our members to invite their friends, and significant others to church.

### **Jerusalén Iglesia Menonita**

### **Lebanon Mennonite**

Support group for parents of kids who have made bad choices

### **Logsden**

1. Increase in numbers
2. Ministries during the week
3. Mennonite Women in Mission – quilting to support MMN

### **Restauración**

1. Young people
2. Taking word out to others

### **Mt. View**

1. VBS – youth and young adults taking leadership
2. Decline in membership and aging of members,
3. Modified appreciative inquiry process and celebration of 100 years this year.

### **Pacific Covenant Mennonite Church**

Nontraditional church mode

## Portland

1. Building relationships with people in the community
2. Space

## Prince of Peace

1. Reading through the Bible together
2. Transient nature of the community (1/3 of the congregation moved away in 2 weeks)

## River of Life

The church is prominently located so lots of people with needs come.

## Salem

2. Pastoral transition

## Shalom

1. Child of congregation returned to share her excitement
2. Lay led

## Spring Valley

1. God very specifically answered our prayer for healing as we were praying.
2. Small, 12-15 on a Sunday, the congregation is aging
3. Have a number of children from the community from dysfunctional homes, need help addressing problems. Have a group of ladies who meet monthly assembling supplies for international use.

## Warden

85% Hispanic with new Hispanic pastor coming  
cross-cultural barriers

## Western

A child from the church came up with an idea for kits to give to those who are hungry. The kids put together zip loc bags with useful items for homeless people. Adults are being challenged by task of distribution.

## Zion

1. How to care for families of those who are dying
2. Searching for pastor
3. Prayer – fear and trepidation

## Table Group Covenant

### The Delegate Body of Pacific Northwest Mennonite Conference

*Adapted from "Confession of Faith in a Mennonite Perspective"  
Article 16, Church Order and Unity*

We gather as a part of the church of Jesus Christ, one body with many members, who by the work of the Holy Spirit are brought together into a dwelling place for God.

As God's people gather at Kalispell 2014, we are the church, a holy temple, a spiritual house, with Christ Jesus himself as our foundation.

We recognize the need to consult together in order to maintain unity on important matters of faith and life. Love and unity in the church are a witness to the world of God's love.

In our deliberations and decision-making we covenant with each other to listen and speak in a spirit of prayerful openness and with the Scriptures as the constant guide. In humility we are open to both give and receive counsel. We know that discernment will include points of agreement and of disagreement, words of affirmation and of dissent. In our discernment we are prepared to wait patiently as we seek a word from the Lord leading toward consensus rather than make hasty decisions.\*

We rejoice in the multiplicity of people, gifts, ideas, and opinions that are present in this gathering of the delegate assembly of the Pacific Northwest Conference.

We covenant together:

- to assume the best intentions of all persons who participate at this table and this assembly.
- to pray for one another and the Conference leaders.
- to be patient and kind.
- to speak honestly and directly.
- to practice humility and be willing to change or be corrected.
- to listen actively and carefully.
- to respect the views of those who may not agree with the majority.
- to respect the wisdom of the greater assembly and of those at our assigned tables.

(Table leaders may lead their table in prayer.)

*\* Consensus means that the delegate body has listened carefully to all voices, majority and minority together, and sought the unity of the Spirit. Consensus is reached when the delegate body has come to a common mind on a matter, or when those who dissent have indicated a readiness to accept a group decision. Consensus does not necessarily mean complete unanimity.*

## **Treasurer's Report / Financial Reports**

### **PNMC 2013 Financial Results and 2014 Budget**

The PNMC fiscal year ended January 31. On December 14, 2013, the Board of Directors approved the 2014 budget. Following is a summary of the 2013 budget and actual income and expenses, and the 2014 budget for the General Fund only:

	<u>2013 Actual</u>	<u>2013 Budget</u>	<u>2014 Budget</u>
Member Church Contributions	\$129,210	\$132,004	\$135,784
Other Income	39,877	8,785	9,379
 Total Income	 \$169,087	 \$140,789	 \$145,163
Total Expenses	\$150,933	\$161,374	\$162,391
Income minus Expense	\$ 18,154	\$ (20,585)	\$ (17,228)

#### **HIGHLIGHTS**

##### **2013 Results**

The fiscal year 2013 Actual results show a General Fund surplus of \$18,154. In addition, Annual Meeting had a surplus of \$4,900, Peace Mennonite had a deficit of \$5,600, and NW Mexico had a deficit of \$20,400. Sharing Funds declined by \$2,200 as disbursements were made to support medical expenses for pastors.

Member church contributions were \$2,800 less than budgeted. Other Income and Total General Fund income was \$31,000 higher than budgeted, primarily due to an estate gift shown under Individual Contributions.

Actual General Fund expenses were \$10,400 lower than budgeted.

##### **2014 Budget**

The Member Church Contributions total of almost \$136,000 is based on the commitments provided by each congregation for giving this year. This is a 5.1% overall increase from 2013 actuals (2.9% increase from 2013 budget).

Total budgeted General Fund expenses for 2014 increase \$11,500 (7.6%) compared to total actual expenses for 2013, but increase less than 1% compared to the 2013 budget.

The board approved the 2014 budget with a projected deficit of \$17,228 with a commitment to continue focusing on ways to move PNMC toward financial sustainability.

#### **Comments to the detailed Financial Reports**

Two detailed financial reports are provided. The Income and Expense Report contains the budget and actual results for 2013 and the budget for 2014. The Balance Sheet Report shows the balances as of January 31, 2014, along with the previous two years.

#### **General Fund Income and Expense Report**

The Income and Expense Report contains several columns of information as follows:

- The 2013 Actual column contains the actual income and expenses for the 2013 fiscal year (February 1, 2013 through January 31, 2014).
- The 2013 Budget column contains the budget for the fiscal year.
- The next column shows the dollar amount difference of the 2013 actual income and expenses compared to the 2013 budget.
- The column titled 2014 Budget is the budget for the coming year as approved by the Board of Directors on December 14, 2013.
- The final column compares the 2014 budget amounts to the 2013 actuals.



## **2013 Budget and Actual amounts**

### **Income**

Member church contributions in total were almost \$2,800 less than the 2013 budget. Of 36 churches on the PNMC membership list, 9 increased their contributions compared to 2013 (compared to 13 last year), while 15 decreased (compared to 9 last year) and 7 held steady (14 last year). Five congregations were zero in both years.

Income account 4206 Contributions-Individuals reflects the giving of various persons or households who make direct gifts to PNMC, and includes an estate gift of almost \$28,000.

The \$4,200 shown in account 4208 Affiliated Mennonite Groups represents a regular contribution from the Mennonite Village in Albany.

Account 4305 Miscellaneous Income shows a small refund for prior year expenses.

Accounts 4601 and 4610 Designated Fund Receipts and Disbursements shows funds received and passed on for specific purposes.

Accounts 4701 through 4804 show bank and investment interest, dividends and earnings.

### **Expenses**

Account 5100 Executive Conference Minister expenses were \$4,200 less than budgeted.

Account 5170 District Pastor expenses were \$3,300 less than budgeted.

Account 5240 Administrative Assistant was \$1,200 less than budgeted.

Account 5250 Communications Coordinator was very slightly higher than budgeted.

Account 5500 Pastoral Leadership Team was \$400 higher than budgeted, primarily for credentialing services for pastoral candidates.

Account 5530 Theological Education Team was \$500 lower than budgeted, because there was no Ministry Inquiry participant in 2013.

Account 5814 Mexico Work was \$1,800 less than budgeted.

Account 5910 Personnel Recruitment & Relocation was equal to the budget, showing expenses for the family relocation of the Executive Conference Minister in 2013.

Account 595102 Communication Coordinator Expenses was budgeted in this account for translation services for PNMC publications, but the actual expenses were moved to Account 5955 Contracted Services, which also included some reimbursement for interim pastoral services.

Account 6000 Conference Office Expenses were \$1,500 less than budgeted, primarily due to budgeted Evangel translation expenses being recorded in Account 5955 Contracted Services.

Account 6112 Travel Pool & Meeting Expenses were \$1,400 higher than budgeted, primarily due to higher than expected expenses for District Pastor travel.

No expenses were recorded in 2013 for Account 6220 Professional Development or Account 6300 Conference Communications Council.

## **2014 Budget**

Each congregation generally communicates the amount to be budgeted for Member Church Contributions. In a few cases, last year's actuals were used as an estimate. In several cases the congregational fiscal year (i.e. June - May) does not match the PNMC fiscal year, so the latest available information was projected for the PNMC fiscal year. No congregations with a budget amount last year have a zero pledge for 2014. There are no new congregations with pledges for 2014.

The Executive Conference Minister Support as contained in the 5100 expense accounts is determined and approved by the Board based upon MCUSA Guidelines for Pastor's Salary and Benefits. Account 5107 Medical HRA is used to record

expenses resulting from the PNMC Board's agreement to share one-half of the deductible for the Executive Conference Minister's Corinthian Plan policy.

Account 581415 Mexico Leadership Exchange represents the revised commitment of PNMC to partnership with the churches in NW Mexico.

Account 5910-Personnel Recruitment and Relocation shows zero budget this year, as that obligation was completed in 2013.

Account 5958 Translation Services is a new account for 2014. These expenses were previously shown in other accounts.

#### **Balance Sheet - January 31, 2012, 2013, 2014**

Account 110201 Checking Account (US Bank) is the primary PNMC checking account. For record keeping purposes, this account was set up with sub-accounts in the bookkeeping system to be able to track the Peace Mennonite properties funds separately from the PNMC general fund. The Total 110201 balance increased from \$62,000 in 2012 to \$147,000 by January 31, 2017, primarily due to property sale and estate gift income.

Asset Account 110205-Sharing/Reserve Fund contains funds reserved for the Sharing Fund – Insurance Premium and Sharing Fund – Catastrophe to assist PNMC pastors with medical expenses. The decline from \$21,000 in 2012 to \$16,000 in 2014 reflects continuing usage of these funds to address medical needs.

Asset Account 110302-MMA Praxis Money Market Fund showed a \$182,000 increase from 2013 to 2014, as funds were transferred from the close-out of the Church Extension Services investments.

Asset Account 110605 Savings Certificates (Church Extension Services) decreased to zero as Everence closed out the CES program. Total Assets increased from \$318,000 to \$446,000 from 2012 to 2014.

Liability 2000-Accounts Payable shows January 2012 expenses that were due but not paid until February of that year.

Equity Account 300103 Mexico Projects Fund showed an increase from 2012 to 2013, and then a decrease to \$3,000 in 2014. The increase reflects additional contributions to the fund, and the decrease reflects \$20,000 paid out for Mexico projects during 2013.

Equity Account 300105-Peace Rental Funds from the Peace parsonage sale shows a balance of \$104,352, with some additional expenses paid during 2012.

Equity Account 300106-Peace Campus Funds balance of \$11,911 represents the excess of income over expenses for the Sanctuary (former Peace Mennonite) property since May 2010 when PNMC assumed responsibility. These funds are held in reserve for maintenance or other unforeseen expenses that may be needed by the remaining property. During 2013, almost \$12,000 was spent for carpet replacement.

Three Equity Accounts were zeroed out by Board action in 2012 and their balances moved to 3500 Net Assets Available (PNMC's flexible funds). The discontinued accounts are 300101 MC USA Assembly Delegate Fund, 320803 PNMC Ministries (Trinity) and 320901 Church Building (Grantable).

Equity Account 320801 Seed Northwest represents funds designated from the Eugene Mennonite Church to be used for ministry development and outreach. Details on this matching fund initiative for church projects are published separately.

Equity Account 3500 Net Assets Available increased from \$17,000 to \$216,000 from 2012 to 2014. The 2014 balance would be \$95,000 higher if Seed Northwest was not shown in its own account.

**Pacific Northwest Mennonite Conference**  
**Balance Sheet**  
As of January 31, 2014

	Feb 2011 - Jan 2012	Feb 2012 - Jan 2013	Feb 2013 - Jan 2014
<b>ASSETS</b>			
Current Assets			
Bank Accounts			
110201 Checking Account (US Bank)	0.00	0.00	0.00
110202 General Fund Checking (US Bank)	62,114.29	152,314.45	146,863.39
110203 Peace Menn Checking (US Bank)	117,108.03	0.00	0.00
Total 110201 Checking Account (US Bank)	\$ 179,222.32	\$ 152,314.45	\$ 146,863.39
110205 Sharing/Resrv Fund (US Bank MM)	20,991.83	17,826.12	15,643.05
110302 Money Market Fund (MMA Praxis)	98,595.51	88,595.51	270,751.49
Total Bank Accounts	\$ 298,809.66	\$ 258,736.08	\$ 433,257.93
Total Current Assets	\$ 298,809.66	\$ 258,736.08	\$ 433,257.93
Other Assets			
110600 Endowment Funds		0.00	0.00
110603 Stock & Bond Fund (Menn Found)	11,280.43	11,910.67	13,026.25
110605 Savings Certificate (CES)	7,781.17	180,521.82	0.00
Total 110600 Endowment Funds	\$ 19,061.60	\$ 192,432.49	\$ 13,026.25
Total Other Assets	\$ 19,061.60	\$ 192,432.49	\$ 13,026.25
<b>TOTAL ASSETS</b>	<b>\$ 317,871.26</b>	<b>\$ 451,168.57</b>	<b>\$ 446,284.18</b>
<b>LIABILITIES AND EQUITY</b>			
Liabilities			
Current Liabilities			
Accounts Payable			
2000 Accounts Payable	571.87	0.00	0.00
Total Accounts Payable	\$ 571.87	\$ 0.00	\$ 0.00
Other Current Liabilities			
210000 Payroll Liabilities	0.00	0.00	0.00
2102 Federal Withholding	206.18	1,238.04	1,183.68
2104 State Withholding (OR)	46.30	162.86	154.57
210401 Oregon Unempl	-181.99	144.39	115.36
210402 Oregon WBF	0.00	0.00	0.00
Total 210000 Payroll Liabilities	\$ 70.49	\$ 1,545.29	\$ 1,453.61
211112 Payroll Tax Payable	0.00	0.00	0.00
Total Other Current Liabilities	\$ 70.49	\$ 1,545.29	\$ 1,453.61
Total Current Liabilities	\$ 642.36	\$ 1,545.29	\$ 1,453.61
Long-Term Liabilities			
220100 Peace Properties Loan	0.00	0.00	0.00
Total Long-Term Liabilities	\$ 0.00	\$ 0.00	\$ 0.00
Total Liabilities	\$ 642.36	\$ 1,545.29	\$ 1,453.61
Equity			
300101 MCUSA Assembly Delegate Fund	2,000.00	0.00	0.00
300103 Mexico Projects Fund	9,061.67	23,426.67	3,066.95
300105 Peace Rental Funds	105,602.31	104,352.31	104,352.31
300106 Peace Campus Funds	9,381.42	17,515.17	11,911.69
320700 Loan Funds		0.00	0.00

	Feb 2011 - Jan 2012	Feb 2012 - Jan 2013	Feb 2013 - Jan 2014
320702 Memorial Loan Fund (Equipment)	4,877.30	3,160.34	3,160.34
Total 320700 Loan Funds	\$ 4,877.30	\$ 3,160.34	\$ 3,160.34
320800 Ministry Funds		0.00	0.00
320801 Seed Northwest		0.00	95,000.00
320803 PNMC Ministries (Trinity)	5,500.00	0.00	0.00
320805 PNMC Mennonite Women	958.00	503.00	282.00
Total 320800 Ministry Funds	\$ 6,458.00	\$ 503.00	\$ 95,282.00
320900 Trust Funds		0.00	0.00
320901 Church Building (Grantable)	5,000.00	0.00	0.00
320902 Missions Grant	0.00	0.00	0.00
Total 320900 Trust Funds	\$ 5,000.00	\$ 0.00	\$ 0.00
34000 Sharing/Reserve Funds		0.00	0.00
34001 Sharing Fund - Ins Premium	12,269.09	9,103.38	7,920.31
34002 Sharing Fund - Catastrophe	8,722.74	8,722.74	7,722.74
Total 34000 Sharing/Reserve Funds	\$ 20,991.83	\$ 17,826.12	\$ 15,643.05
3500 Net Assets Available	16,788.47	150,125.50	216,446.83
3900 Retained Earnings	0.00	0.00	0.00
Net Income	137,067.90	132,714.17	-5,032.60
Total Equity	\$ 317,228.90	\$ 449,623.28	\$ 444,830.57
TOTAL LIABILITIES AND EQUITY	\$ 317,871.26	\$ 451,168.57	\$ 446,284.18

Friday, Feb 28, 2014 12:01:30 PM PST GMT-8 - Accrual Basis

# Pacific Northwest Mennonite Conference 2013 General Fund Budget vs. Actuals and 2014 Budget

February 2013 - January 2014

	2013 Actual	2013 Budget	\$ Under/Over Budget	2014 Budget	2014 Budget - 2013 Actuals
<b>Income</b>					
<b>4101 Member Church Contributions</b>					
410101 Albany	9,500.00	9,500.00	0.00	9,500.00	-
410103 Calvary	5,000.00	5,000.00	0.00	5,000.00	-
410104 Centro Cristiano Pentecostes	700.00	700.00	0.00	700.00	-
410106 Corvallis	2,400.00	2,600.00	(200.00)	3,200.00	800.00
410108 Emmaus	360.00	720.00	(360.00)	720.00	360.00
410109 Eugene		1,000.00	(1,000.00)	1,000.00	1,000.00
410110 Evergreen	1,900.00	1,900.00	0.00	2,000.00	100.00
410112 Evergreen Heights	1,140.00	1,070.00	70.00	1,070.00	(70.00)
410114 Filer	3,080.99	4,896.00	(1,815.01)	4,896.00	1,815.01
410118 First - Aberdeen	4,580.65	3,500.00	1,080.65	3,500.00	(1,080.65)
410120 First - McMinnville	600.00	1,200.00	(600.00)	1,200.00	600.00
410122 Hyde Park	6,155.32	6,109.00	46.32	6,201.00	45.68
410126 Iglesia Men. Roca De Salvacion	900.00	900.00	0.00	900.00	-
410127 International Bethel City Church	250.00	400.00	(150.00)	250.00	-
410130 Lebanon	8,400.00	9,600.00	(1,200.00)	9,600.00	1,200.00
410132 Logsden	1,800.00	1,950.00	(150.00)	1,800.00	-
410133 Menno	6,868.19	5,500.00	1,368.19	5,500.00	(1,368.19)
410135 Mountain View	4,150.00	4,150.00	0.00	4,150.00	-
410137 Pacific Covenant	100.00		100.00	0.00	(100.00)
410142 Portland	19,000.00	19,000.00	0.00	20,330.00	1,330.00
410143 Prince of Peace (AK)	2,400.00	2,400.00	0.00	2,400.00	-
410146 Bend Mennonite Church		400.00	(400.00)	400.00	400.00
410148 River of Life	3,000.00	3,000.00	0.00	3,000.00	-
410150 Salem	14,816.75	14,817.00	(0.25)	15,262.00	445.25
410152 Seattle	13,275.00	12,500.00	775.00	13,275.00	-
410154 Shalom	800.00	750.00	50.00	750.00	(50.00)
410156 Spring Valley	633.00	192.00	441.00	280.00	(353.00)
410160 Warden		1,000.00	(1,000.00)	1,500.00	1,500.00
410162 Western	1,250.00	1,250.00	0.00	1,250.00	-
410164 Zion	16,150.00	16,000.00	150.00	16,150.00	-
<b>Total 4101 Member Church Contributions</b>	<b>\$ 129,209.90</b>	<b>\$ 132,004.00</b>	<b>\$ (2,794.10)</b>	<b>\$135,784.00</b>	<b>6,574.10</b>
<b>4200 Other Contributions</b>					
4206 Contributions-Individuals	32,167.87	3,575.00	28,592.87	3,575.00	(28,592.87)
4208 Affiliated Mennonite Groups	3,850.00	4,200.00	(350.00)	4,200.00	350.00
<b>Total 4200 Other Contributions</b>	<b>\$ 36,017.87</b>	<b>\$ 7,775.00</b>	<b>\$ 28,242.87</b>	<b>\$ 7,775.00</b>	<b>(28,242.87)</b>
<b>4300 Other Income</b>					
4305 Miscellaneous Income	121.37		121.37	0.00	(121.37)
<b>Total 4300 Other Income</b>	<b>\$ 121.37</b>	<b>\$ -</b>	<b>\$ 121.37</b>	<b>\$ -</b>	<b>(121.37)</b>
<b>4600 Designated Funds (Denom)</b>					
4601 Designated Fund Receipts	100.00		100.00	0.00	(100.00)
4610 Designated Fund Disbursements	(100.00)		(100.00)	0.00	100.00
<b>Total 4600 Designated Funds (Denom)</b>	<b>\$ -</b>	<b>\$ -</b>	<b>\$ -</b>	<b>\$ -</b>	<b>-</b>
<b>4700 Interest/Dividend Income</b>					
4701 Checking/Bank MM Interest	15.05	6.74	8.31	12.00	(3.05)

	2013 Actual	2013 Budget	\$ Under/Over Budget	2014 Budget	2014 Budget - 2013 Actuals
4703 Investment Interest Earnings					
470301 Church Ext. Serv Dividends	1,634.16	426.33	1,207.83	0.00	(1,634.16)
470302 MMA Praxis Money Market	515.38	273.00	242.38	432.00	(83.38)
Total 4703 Investment Interest Earnings	\$ 2,149.54	\$ 699.33	\$ 1,450.21	\$ 432.00	(1,717.54)
Total 4700 Interest/Dividend Income	\$ 2,164.59	\$ 706.07	\$ 1,458.52	\$ 444.00	(1,720.59)
4800 Investment Gains/Losses					
4802 MF Stock/Bond Fund Income	208.65	303.85	(95.20)	410.00	201.35
4804 Market Value Change-Investments	1,364.72		1,364.72	750.00	(614.72)
Total 4800 Investment Gains/Losses	\$ 1,573.37	\$ 303.85	\$ 1,269.52	\$ 1,160.00	(413.37)
Total Income	\$ 169,087.10	\$ 140,788.92	\$ 28,298.18	\$ 145,163.00	(23,924.10)
Expenses					
5100 Exec. Conf. Minister Support					
5101 Salary/Housing	55,665.00	55,668.00	(3.00)	55,543.00	(122.00)
5104 FICA Support	758.88	2,287.54	(1,528.66)	2,117.00	1,358.12
5105 Corinthian Plan Premiums	9,324.13	11,000.00	(1,675.87)	14,400.00	5,075.87
5106 Retirement	4,453.20	4,452.00	1.20	4,613.00	159.80
5107 Medical HRA	1,390.99	2,400.00	(1,009.01)	3,000.00	1,609.01
Total 5100 Exec. Conf. Minister Support	\$ 71,592.20	\$ 75,807.54	\$ (4,215.34)	\$ 79,673.00	8,080.80
5170 District Pastor Expense					
5171 District Pastor Stipends	16,600.00	18,000.00	(1,400.00)	18,000.00	1,400.00
5172 District Pastor Annual Gathering		1,800.00	(1,800.00)	1,800.00	1,800.00
5173 District Pastor Non Travel Expense		100.00	(100.00)	100.00	100.00
Total 5170 District Pastor Expense	\$ 16,600.00	\$ 19,900.00	\$ (3,300.00)	\$ 19,900.00	3,300.00
5240 Administrative Asst					
5241 Salary Admin Asst	11,782.50	12,600.00	(817.50)	12,960.00	1,177.50
5242 FICA Admin Asst	1,208.90	1,560.00	(351.10)	991.00	(217.90)
Total 5240 Administrative Asst	\$ 12,991.40	\$ 14,160.00	\$ (1,168.60)	\$ 13,951.00	959.60
5250 Communications Coordinator					
5251 Salary Communications Coordinator	3,447.00	3,762.00	(315.00)	3,894.00	447.00
5252 FICA Support	363.58		363.58	298.00	(65.58)
Total 5250 Communications Coordinator	\$ 3,810.58	\$ 3,762.00	\$ 48.58	\$ 4,192.00	381.42
5500 Pastoral Leadership Team					
5501 Pastors' Retreat	2,481.88	2,400.00	81.88	2,400.00	(81.88)
5506 Non-Travel Expenses	309.00	0.00	309.00	200.00	(109.00)
Total 5500 Pastoral Leadership Team	\$ 2,790.88	\$ 2,400.00	\$ 390.88	\$ 2,600.00	(190.88)
5530 Theological Education Team					
5535 Ministry Inquiry Program		500.00	(500.00)	500.00	500.00
Total 5530 Theological Education Team	\$ -	\$ 500.00	\$ (500.00)	\$ 500.00	500.00
5814 Mexico Work					
581415 Leadership Exchange	1,862.90	4,000.00	(2,137.10)	3,000.00	1,137.10
581416 Educational Exchange	315.00	0.00	315.00	0.00	(315.00)
Total 5814 Mexico Work	\$ 2,177.90	\$ 4,000.00	\$ (1,822.10)	\$ 3,000.00	822.10
5900 Board of Directors					
5901 Non-Travel Expenses		100.00	(100.00)	100.00	100.00
5910 Personnel Recruitment & Relocation	2,000.00	2,000.00	0.00	0.00	(2,000.00)
Total 5900 Board of Directors	\$ 2,000.00	\$ 2,100.00	\$ (100.00)	\$ 100.00	(1,900.00)

	2013 Actual	2013 Budget	\$ Under/Over Budget	2014 Budget	2014 Budget - 2013 Actuals
5950 Contracted Services					
5951 Communication Coordinator					
595102 Communication Coordinator		2,100.00	(2,100.00)	0.00	-
Expense					
Total 5951 Communication Coordinator	\$ -	\$ 2,100.00	\$ (2,100.00)	\$ -	-
5955 Other Contracted Services	4,284.20	0.00	4,284.20	0.00	(4,284.20)
5958 Translation Services				2,700.00	2,700.00
Total 5950 Contracted Services	\$ 4,284.20	\$ 2,100.00	\$ 2,184.20	\$ 2,700.00	(1,584.20)
6000 Conference Office					
6003 Evangel		1,500.00	(1,500.00)	0.00	-
6004 Handbook	384.45	400.00	(15.55)	400.00	15.55
6010 Office Supply	1,434.57	600.00	834.57	1,800.00	365.43
6011 Conference Office	0.00	120.00	(120.00)	0.00	-
6014 Misc Expense		400.00	(400.00)	400.00	400.00
6015 Office Communication	2,066.19	2,400.00	(333.81)	2,400.00	333.81
Total 6000 Conference Office	\$ 3,885.21	\$ 5,420.00	\$ (1,534.79)	\$ 5,000.00	1,114.79
6112 Travel Pool & Meeting Expense					
611201 Travel - Board	4,185.27	3,750.00	435.27	3,750.00	(435.27)
611202 Travel - Exec Conf Minister	7,806.42	7,700.00	106.42	6,600.00	(1,206.42)
611203 Travel - District Pastors	14,925.20	12,000.00	2,925.20	14,400.00	(525.20)
611204 Travel - Teams/Committees	630.77	1,000.00	(369.23)	1,000.00	369.23
611205 Travel - Churchwide Events	2,670.87	4,750.00	(2,079.13)	2,500.00	(170.87)
611206 Travel - PNMC Office	514.42	100.00	414.42	750.00	235.58
611207 Travel - Communications					
Coordinator	32.77	100.00	(67.23)	200.00	167.23
Total 6112 Travel Pool & Meeting Expense	\$ 30,765.72	\$ 29,400.00	\$ 1,365.72	\$ 29,200.00	(1,565.72)
6220 Professional Development Expenses		1,000.00	(1,000.00)	1,000.00	1,000.00
6300 Conference Communications Council		500.00	(500.00)	500.00	500.00
6400 Other Expenses					
6402 Investment/Checking Fees	363.63	120.00	243.63	550.00	186.37
6406 Workers Compensation Insurance	887.60	120.00	767.60	120.00	(767.60)
6407 Employer Taxes		1,200.00	(1,200.00)	0.00	-
6408 Property, Liability Insurance	171.40		171.40	500.00	328.60
6409 Accounting, Legal, Professional Fees		300.00	(300.00)	300.00	300.00
Total 6400 Other Expenses	\$ 1,422.63	\$ 1,740.00	\$ (317.37)	\$ 1,470.00	47.37
6510 Peace Mennonite Property					
6511 Management Fees					
651106 PNMC Staff Expense	(1,387.72)	(1,416.00)	28.28	(1,395.00)	(7.28)
Total 6511 Management Fees	\$ (1,387.72)	\$ (1,416.00)	\$ 28.28	\$ (1,395.00)	(7.28)
Total 6510 Peace Mennonite Property	\$ (1,387.72)	\$ (1,416.00)	\$ 28.28	\$ (1,395.00)	(7.28)
Total Expenses	\$ 150,933.00	\$ 161,373.54	\$ (10,440.54)	\$ 162,391.00	11,458.00
Net Income	\$ 18,154.10	\$ (20,584.62)	\$ 38,738.72	\$ (17,228.00)	(35,382.10)

Thursday, Feb 27, 2014 07:25:00 PM PST GMT-8 - Accrual Basis



**BALLOT**  
**Pacific Northwest Mennonite Conference**  
*Kalispell, Montana*  
**June 20-21, 2014**

**Moderator-Elect – Samuel Moran – 4 year term**

Samuel is Pastor of Ministerios Restauración and a member of NW México Liason Committee. He and his wife have six children: Nelly, Sam, Ana, Luis, Dana and Keren (16) and four grandchildren: Abraham, Joshua, Jacob, Uzziha.

*My hope for PNMC is that with the help of the Holy Spirit, we encourage churches and leaders who are true to Anabaptist roots (whose basis are the scriptures and teachings of Jesus Christ) to respond to contemporary challenges with compassion and conviction, thus fulfilling the mission of proclaiming to the world the transforming message of healing and hope of the kingdom of heaven.*

**Treasurer – Brett Tieszen – 3 year term**

Brett grew up in Hesston, Kansas and moved to Vancouver, Washington after graduating from Kansas State in economics. He has attended Portland Mennonite Church since 2010 and began working as the church administrator in 2011. He enjoys reading, board games, and ultimate frisbee. His wife, Karen, works as an engineer and is on the Drift Creek Camp board. Their son, Oliver, was born in December, 2013.

*I look forward to meeting individuals from other Mennonite congregations and aiding PNMC's missions to support churches individually and by making connections between member churches.*

**Board Member –Todd Lehman – 4 year term**

Todd is Pastor of Salem Mennonite Church and the PNMC Mennonite Men contact person. He grew up at First Mennonite, Aberdeen, ID, and is an AMBS graduate. He and his wife Dawn have three children. Havela (19), Kyra (16) and Micah (13).

*My hope for PNMC is that it will provide a space where community can happen, where discernment is pursued with wisdom and love, and where we learn together how to be the church in the world.*

**Board Member appointment –Nelly Ascencio– CIHAN representative  
– 2 year term**

Nelly is a member of Ministerios Restauración Iglesia Hispana Menonita. She works for Portland Mennonite Church as a Nursery Care Provider. Nelly is married to Edin Ascencio and they have 2 lovely boys: Abraham (8) and Uzziah (3).

*My Hope and vision is that the relationship between PNMC and CIHAN can grow and we will have a stronger relationship with one another.*



## BALLOT

*Continued*

### **Board Member appointment – Dave Hockman-Wert – Complete unexpired term of Jerry Barkman (1 year)**

Dave is a member of Corvallis (OR) Mennonite Fellowship and has been married to Cathleen for 17 years. He works as a biologist/GIS specialist for the U.S. Geological Survey.

*I am happy to serve on the PNMC Board again after a four year break, and hope to help PNMC continue to be a caring, connecting community of congregations.*

### **Pastoral Leadership Team appointment – Meghan Good—4 year term**

Meghan is Pastor of Albany Mennonite Church. She is currently on the board of directors of AMBS and a past member of the board of Western Mennonite School.

*My hope is that PNMC would be a network of Anabaptist churches on the front lines of creatively and faithfully adapting to a changing cultural context. I hope that we can support and inspire each other as leaders and congregations to take new risks in the name of Jesus and for the sake of his good news.*

### **Gifts Discernment Team Member – Bob Buxman – 1 year term**

Bob Buxman is a part of Portland Mennonite Church. He is the Northwest representative for MCC, working with church relations. He is also a District Pastor to Zion Mennonite and Salem Mennonite churches.

*As a part of the Gifts Discernment Committee, he hopes help facilitate the formation of strong committees for the PNMC, with good cross representation from the varied PNMC churches.*

### **Gifts Discernment Team Member – Brent Kauffman – 1 year term**

Brent is Lead Pastor at Lebanon Mennonite Church. He is also a District Pastor for River of Live, Albany, and Bend Mennonite Churches. Brent's long history in PNMC and his outgoing nature equip him well to help discern leadership in PNMC that is representative and gifted.

*My hopes and dreams for PNMC—That we might continue to grow in Christ-likeness and will be an excellent reflection of Jesus' character, extending love, grace and mercy to others and accepting people as God accepts us.....focusing on the ministry priorities of Jesus.*

# TEAM / MINISTRY REPORTS

## NW Mexico Report

*With humble gratitude to God, I'll focus on highlights of this past year for the Mexico Liaison Committee. Most of the committee's efforts can be broken into 3 general categories: 1) Evangelism, preaching and healing, 2) Teaching and training, 3) Construction*

1) **Evangelism and preaching** continue to be a major focus. For the past 35 years Simon Rendon has made one or two trips per year for this purpose and more recently has been aided by Rick Troyer and Miguel Castillo. These trips have encouraged and supported growth of the local Mexico churches. Hundreds of souls have been saved, and dramatic healings have changed lives. As Christ came to show and teach us, so the preaching and evangelism have been an example to the local pastors and churches there. Simon's, Rick's and Miguel's recent trips demonstrate so well that the non-believers are hungry and receptive to the Word of God. As Paul returned to churches that were started on earlier journeys, so our pastor's yearly visits encourage, challenge, give direction and sometimes discipline the churches and leaders there.

2) **Teaching and training** are vital to the future of NW Mexico. Many of the pastors there have limited or no formal pastoral training. Samuel Moran, the teaching point man of our committee, has been helping facilitate continuing education for local Mexico pastors. This included the side by side teaching of Samuel Moran, Simon Rendon and Samuel Lopez of the Lancaster Conference, in an April seminar held in Navojoa, Sonora, Mexico. We sense that this particular branch of the three inputs is by far the most important and needs continued focus and development. The Lancaster Conference has been very helpful in the past, and hopes to continue the mutual efforts of supporting the pastoral education process. One aspect that we see as weak in the NW Mexico pastors is long-range goal setting and follow-up actions to reach those goals. It is also quite clear that the next generation of potential pastors is not content to continue the status quo.

3) **Construction** projects, which are perhaps the easiest of the 3 to do, also can have major impact. In the last 3 years PNMC has helped construct 3 churches, this year it was in El Refugio. These new buildings demonstrate to the surrounding community: a cohesive support from all those participating, change, growth, opportunities for other outreach programs, and "that things are happening." For the church itself, it can mean the long wait for a church building is over, that there will finally be a bathroom, a roof that won't leak, a cooler place to worship, better time schedules for worship services, room for youth activities, and a space where everyone is able to get inside the building during the sermon.

For those of us at home who donate funds, construction projects are a visible way to participate in the missionary efforts there. We have seen that when there is no construction project, donations drop off, greatly impacting the rest of the infrastructure needs. Other benefits of construction projects are: some youth get a chance at a short term out of country VS opportunity, different NW congregations get first hand building experience in a new cultural setting, and for the last 3 years, 3 different Mennonite cultures have worked together for the good of the local Mennonite congregation.

Other activities of our committee this past year have been; coordinate the activities of the Mexican conference representative, give local NW churches informational visits, prepare for conference presentations, think on how to sensibly explain to our brothers in México, the direction and actions of the north American Mennonite conferences, and write informational articles for the NW conference papers.

Curt Dorsing  
NW Mexico Liaison Committee

# Pastoral Leadership Team

*Submitted by Lynn Miller, PLT Chair*

April 2014

Team Members: Cathy Passmore, Rod Stafford, Gary Jewell, Simon Rendon, Lynn Miller plus Executive Conference Minister, Katherine Pitts. Barbara Buxman serves as our recorder.

The Team met 3 times in 2013. We continued to review our requirements for ordination with an effort to make them align with denomination priorities and standards. We have also had discussions regarding providing theological education experiences for our conference.

As a way to resource our District Pastors our team approved a list of questions DPs can use in conversations with their pastors. These questions are meant to assist in giving structure for meaningful discussion.

There has been little credentialing activity this year. We are currently working with a request from the Warden congregation regarding credentials for their pastor, Miguel Castillo.

Recent leadership changes include:

Sam Adams, Amanda Detweiler and Angela Boss are co-leading Bend Mennonite

Todd Lehman is pastor at Salem Mennonite

Weldon Nisly retired at Seattle Mennonite; Gordon Scoville is currently interim pastor

Mathew Swora is pastor at Zion Mennonite

Miguel Castillo is pastor at Warden Mennonite

Victor Fuentes is serving Comunidad Cristiana de Vida Nueva as interim preacher

Angel Compos is pastor at Jerusalem Iglesia Menonita

*We mourned the death of Nan Gascho, chaplain and wife of Tim Gascho, on April 18, 2014.*

Respectfully submitted,  
Lynn Miller, PLT chair

# PNMC Historian's Report

*Submitted by Ray Kauffman, PNMC Historian, March 31, 2014*

Recently I was asked to write a history of the PNMC for the *Evangel*. The PNMC dates back to 1994 when the PDC, PCC, and SMC merged into two new conferences, the PNMC and the PSMC. The PDC was organized in 1896 and the PCC in 1906. In 1921 the national merger of Mennonites and Amish occurred. In 2001 the church-wide merger of the GC and MC was completed.

The following congregations have anniversaries to celebrate this year: Filer (100<sup>th</sup> – Centennial; est. 1914), Portland (90<sup>th</sup>; est. 1924), and Calvary (70<sup>th</sup>; est. 1944). Former PCC Fairview (120<sup>th</sup>; est. 1894).

Within the past year the PNMHS has planned two public meetings. On September 15, 2013 at Albany MC “History in the Kitchen: What Mennonite Cooking Tells Us about Our Past” was addressed by five speakers including Shirley Showalter via video and Cathleen Hockman-Wert who said, “The best way to impact theology is to write a hymn book, or a cook book.” A Fasma was served in the Bethany Center after the program. March 30 of this year “Drift Creek Camp: Thanks for the Memories” was the theme of a program at Albany MC. Former DCC directors, staff personnel, and volunteers shared memories followed by an open mike. “Camp food” was served as refreshments.

I recommend these books for your church libraries:

*Ambassador to His People – C.F. Klassen and the Russian Mennonite Refugees*, by Herbert and Maureen Klassen, 1990, Kindred Press

*It Happened in Moscow: A memoir of discovery*, by Maureen S. Klassen, 2013, Kindred Productions

*Mennonites in Ukraine Amid Civil War and Anarchy (1917-1920) – A documentary collection translated and edited* by John B. Toews, 2013, Center for MB Studies, Fresno, CA

*The Politics of Jesus*, by John H. Yoder, 1972, Erdmans

*Apart and Together – Mennonite in Oregon and Neighboring States 1876-1976*, by Hope Kauffman Lind, 1990, Herald Press

Sharing stories -- Over the past decade of being conference historian I have witnessed a growing emphasis on the importance of sharing our stories. John D. Roth writes a compelling and understandable book on our history in his *Stories: How Mennonites Came to Be*, 2006, Herald Press. History is recorded stories. Conrad Stoesz of Mennonite Heritage Centre, Winnipeg, states that “Without stories that shape our values, we will be shaped by the dominant stories or our surrounding society, which may not be the same values as our Christ-centered congregations promote. . . . Our lives are truly enriched as we gather, preserve and share stories of the Mennonite people – tasks that our archival centers continue to promote.” Along the same line, Alf Redekopp, Director of Mennonite Heritage Centre writes “Acknowledging that if we lose our way to the past, we lose our way to the future. There is a constant need to remind individuals and organizations of the importance of on-going documentation of life and faith through the collection, preservation, and distribution of resources relating the history of the church in every age and culture.” That too is the mission of the PNMHS and archives at the Kropf Heritage Center. Please keep us in your prayers as we work at preserving the memory of our heritage and sharing it through the resources we manage.

I conclude with a story from sisters Marty and Marilyn Lehman, taken from the December 2011 issue of *The Mennonite* (page 34). The Lehman sisters’ Amish grandparents, Joseph and Barbara (Yoder) Bontrager were early settlers in Northern IN on land forcefully taken from the Potawatomi by the U. S. Army only a few years earlier. “We knew there were Native Americans in Indiana before our ancestors arrived; we grew up among towns with such names as Topeka, Wawaka, Mishawaka and Shipshewana. But somehow we did not connect their disappearance with the arrival of our ancestors. . . . We offer this as a cautionary tale. Our Anabaptist ancestors, by all accounts, were devout people committed to faithfulness to the church and to their separatist way of life. If this complicity with the government’s agenda of empire building seems at odds with our sensibilities, we do well to remember it is aligned with the 19<sup>th</sup> C. American idea of Manifest Destiny. What remains for us is not so much to judge our ancestors as to question the ways we, like them, tend to focus on our own small communities and fail to notice the injustices around us we may be implicitly supporting.”

Ray Kauffman  
PNMC Historian

# PNMC AREA ORGANIZATIONS & SCHOOL REPORTS

## Drift Creek Camp

After the craziness of the 2012 road closure, 2013 flew by as we frantically tried to fill weekends to make up for losses from the previous year. Summer camp was well attended with 324 campers. The support of dozens of volunteers is what makes DCC summer programming possible. Two IVEPers (*International Volunteer Exchange Program through MCC*) were able to serve at DCC for about five weeks. Clivia Avila was from Honduras and Anne Klaassen was from Germany. The two helped prepared projects for summer camp, helped in the kitchen, assisted with caretaking and served as cabin counselors. Garrett and Maranda Horton of Kansas came to DCC through the SOOP program for 5 weeks as well. They helped with cooking and worked with the teen volunteers.

Each year when summer camp concludes, it is both inspiring and humbling to think about the countless number of people who serve. We are deeply grateful for each volunteer who prepares meals; each nurse who provides medical care; each parent who transports children up and down the long, winding road; and each pastor who walks with campers toward faith. We are grateful for the camp staff, the teen volunteers and counselors, who sacrifice their time and forego better paying jobs in order to provide a rich and meaningful camp experience to children. Because DCC cannot afford to compensate summer counselors as well as what they would earn through other employment opportunities, we encourage individuals, families, small groups and congregations to consider amending the stipend, perhaps through college scholarships, for staff who serve from your congregation? Our goal is to maintain a counseling staff from our conference, but many students simply cannot afford to sacrifice not earning what they need for ever-increasing college tuition costs.

November 8-10 marked the 2013 Annual Members' Meeting. Participants made apple butter, indulged in homemade donuts, ventured on hikes, hiking *the* grounds, great food and Dave Hockman-Wert's presentation on trees, *The Breath of God*. Funds were raised at the Annual Meeting auction to replace the currently moss-covered roof on the caretaker cabin with durable metal. The structure is the oldest building on-site and gets more use than any other building since it is inhabited full-time throughout the year. While we are prohibited to expand the current footprint of the structure, the hope is to also install dormers in the kitchen which would provide much-needed upper cabinets. The board is also seeking USFS approval to restore the old garage space and transform it into additional working space for the staff. These improvements will go a long way in improving daily operations.

Women gathered April 4-6 to build community; grow spiritually and be renewed through time away and nurturing friendships. The 2014 Women's Retreat featured speaker, Carol Honderich of Mennonite Mission Network in Goshen, IN. Carol has created an elaborate ministry that combines her passion for quilting with her love of the Bible. Guests enjoyed hearing how God, to Carol's surprise, worked through her to inspire women, (some from other parts of the world!) and help women in today's world discover their own connections with women of the Bible. The retreat was the biggest Women's Retreat at DCC with nearly 50 in attendance, including two from sister congregations in Washington. Women enjoyed times for rest, quiet, learning new skills and feeding their desire to be creative. Those in attendance were especially touched by the worship leading from Kathleen Aeschliman and her two daughter, Beth Ann and Janette, and Janette's daughter, Lacey. We are grateful to Pat Hershberger for the leadership role she has taken in planning the retreat and are grateful to the entire committee, including Jeanette Flaming, Caitlin Yoder and Dawn Lehman. In addition to worship and sharing, women enjoyed times for rest, quiet, and creativity.

The Drift Creek Nature Center continues to meet every second month to explore ways to provide resources and develop programming to enrich the experience of guests visiting DCC. We are pleased that Ken Kauffman has agreed to volunteer as camp naturalist for our 4 weeks of Summer Camp and exploring grant opportunities for funding a camp naturalist for all summer programs at DCC. We are pleased with the quality of programming and level of participation in the Family Nature Retreat and Fall Mushroom Retreat as we continue to co-sponsor these events with Friends of Straub Environmental Learning Center.

The 2014 summer camp theme is based on materials from Faith and Life Press, ***Welcome: Give and Receive God's love!*** Campers will be challenged to think about what it means to be a world citizen; a good neighbor and to offer love to all whom we encounter.

**We are deeply grateful for every volunteer, every donor, each congregation and every camper, who together, make camp operations possible. We covet your prayers and your partnership in sustaining DCC for generations to come.**

*Submitted by Brenda Kauffman & John Gingerich, April 2014*

# Mennonite Village

## ANNUAL REPORT TO THE PACIFIC NORTHWEST MENNONITE CONFERENCE

APRIL 2014

*Submitted by Ron Litwiller, President/ CEO*

Mennonite Village continues to advance plans for relocating our health services facilities to adjacent property. The estimated cost of the project is \$32 million and the board has approved the launch of a capital campaign.

The demand for units in our independent living section of our facility has been very steady, creating a need for more units. In the last 6 months, construction began on four new duplexes and one single-family unit. The first occupant in the newly constructed units moved in February.

We continue preparing for the increased demand for units as the number of retiring baby-boomers enter the market. We are also enjoying high occupancy in the other areas of our facility. Mennonite Village has been the only CCRC in Oregon that accepts Medicaid reimbursement. This point is an important part of our “culture of caring” that is appreciated by those in our care.

The creation of Mennonite Services North West, a companion organization, enables us to provide much needed services to smaller organizations at a reasonable cost. The most recent management contract is with Macdonald Residence an organization that cares for lower income seniors in Portland. Many of the occupants would be homeless, were it not for the existence of Macdonald Residence.

Our chaplains, Teresa Moser and Eric Martin, provide a wide range of services for our residents, our employees, and their families. We receive letters from family members regarding the comfort provided by Teresa and Eric. They also prepare and lead Bible studies and worship services across the campus. Two times a year, they invite family members of those who have passed away to attend a “Living Tree” memorial service. Loved ones are honored during the brief ceremony as the names of their loved ones are read. The family or one of our staff then places a memorial “ornament” on a tree in the middle of the chapel.

Mennonite Village values its relationship with local congregations and with the PNMC. We anticipate a deeper relationship as Mennonite Health Services Alliance joins Mennonite Church USA as an agency. Many health and human services organizations were started by congregations but left conference sponsorships in the 1980s. New relationships are being established that are similar to founding relationships.

---

## Relief, development and peace in the name of Christ

*Greetings from West Coast MCC!*

*Your financial gifts, prayer support and volunteer hours impact MCC and the people featured in the stories below. Thank you for helping MCC share God's love and compassion for all.*

### Building Peace through Relief

MCC is providing disaster-resistant shelters and basic kitchen utensils for almost 3,000 Filipino families who lost their homes during November's Typhoon Haiyan. The more than \$1-million response will focus on the hardest-hit of the coastal municipalities of Naval in Biliran Province and Dulag in Leyte Province. They are two of many municipalities in the Philippines where homes, livelihoods and public buildings were devastated by the typhoon that displaced 4.1 million people and destroyed 1.1 million homes.

The largest international humanitarian responses are focused on the most populated areas, so MCC, as it typically does after a disaster, focused on smaller communities that had not yet been served. MCC works with partner organizations that have or can establish those community connections. Partners work closely with community leaders to choose recipients who are particularly vulnerable, such as families that have single parents, a family member with a disability or many children.

### Building Peace through Development

In the urban compound of Menno Kids Academy, in Nairobi, Kenya, tables of clear, plastic bottles fill the courtyard — a simple but powerful tool in a fight for better health. Through the day, the sun's ultraviolet rays soak into the bottles of water, killing bacteria, viruses and parasites, providing the gift of clean water to the school's nearly 500 pupils.

Morris Ndalila, a father of seven, had long known the water coming from his tap was contaminated and unfit to drink. Yet he could not afford to buy water or the fuel needed to boil enough water for his large family. "We always suffered from diarrhea; children complained of stomach pains, and their skin was always having ringworms," Ndalila remembers.

Today, Ndalila's family is rarely ill — a change he attributes to solar disinfection, plus training in hand washing, hygiene and sanitation. Parents report that since the project began, their children are spending more time in school and less at the health center.

And, Ndalila found, as children's health and school attendance improved, grades often go up as well, so much so that now he has a new worry — how to pay fees for secondary school.

### PNMC Conference Support

In 2013, PNMC churches donated over \$69,234.62 to support MCC, in addition to generous donations of material resource kits and comforters. Thanks to all those involved in the Pacific Northwest relief sales and fundraisers: the Idaho Mennonite Relief Sale in Nampa, Idaho; Oregon Mennonite Festival for World Relief in Albany, Oregon; Mennonite County Auction in Ritzville, Washington; and other fundraisers. Through these fundraisers, a combined total of \$231,885 was donated to MCC last year.

#### *Currently serving with MCC internationally:*

Derek Hostetler and Soleakhena So—Portland Mennonite Church—Cambodia  
Gary and Linda Nafziger-Meiser—Hyde Park Mennonite Fellowship—Tanzania  
Kurt Hildebrand and Wilda Mondestin—Seattle Mennonite Church—Haiti  
Michael and Lisa Bade—Seattle Mennonite Church—Cambodia  
Lisa Hughes—Portland Mennonite Church—Zambia  
Meghan Reha—Seattle Mennonite Church—Bangladesh  
Erika Bollman—Emmaus Christian Fellowship--Indonesia

*Current PNMC representation on the West Coast MCC board of directors: Bob Pauw, Angela Boss, Pedro Olvera and Galen Martin*



# WESTERN MENNONITE SCHOOL

*Equipping Students for a Life of Faith and Learning*



Christ-Centered  
Academic Excellence  
Nurturing Community  
Peace and Service  
Enrichment Opportunities



From left to right

Paul Schultz: Head of School

Zig Derochowski: Academic Director

Robby Gilliam: Dean of Students & Campus Pastor

With the approach of spring, life around Western picks up the pace! Seniors look forward to graduation, our 42<sup>nd</sup> annual benefit auction approaches May 3, excitement for mini-term grows, the softball and baseball season are in full swing, students are preparing hard for the spring performance of *The Sound of Music*, and our final Spiritual Renewal Week is just around the corner! These are just a few things that make Western a very busy place for the next three months.

There have also been exciting developments as Administration and the School Board look forward to the next school year and make plans for Western to continue growing in its mission to equip students for lives of faith and learning. Renewed focus was placed on Strategic Planning in December and there has been concentrated effort to create a plan and vision for the next five years. Plans and details will be revealed to our community and the public at our upcoming Auction on May 3. We are very excited that we have strengthened our foundation and are now poised to make key improvements in the academics we provide, the property and facilities that we have been blessed with, and to maintain financial health.

Please be in prayer for our administrators, school board, faculty, staff, students, and families as we all work to maintain balance with the many activities that this spring has in store!

Paul Schultz | Head of School

## Upcoming dates

April 8-10..... Middle School Testing  
April 10-15..... MSC Music Festival  
April 11..... Jr/Sr College Tours  
April 28-May 2..... Spring Spiritual Renewal Week  
May 3 ..... 42nd Annual Benefit Auction  
May 9-10 ..... Sound of Music  
May 13 ..... College Prep Night  
May 14 ..... Visitors Day  
May 15-17 ..... Sound of Music  
May 28 ..... MS Spring Concert  
May 29 ..... HS Spring Concert  
   Senior Awards Night  
June 2-4 ..... Final Exams  
June 6-12 ..... Mini Term  
June 14 ..... Commencement

Visit [www.WesternMennoniteSchool.org](http://www.WesternMennoniteSchool.org) to keep a tab on what is going on at WMS!



---

## **COLLEGE & UNIVERSITY REPORTS**

**Associated Mennonite Biblical Seminary**

**Bethel College**

**Bluffton University**

**Eastern Mennonite Seminary**

**Eastern Mennonite University**

**Goshen College**

**Hesston College**

---



**New degree program:** AMBS launched a new Master of Divinity program last fall with a distance option and fewer credit hours. MDiv Connect allows students to study in their home context with only brief visits to campus two or three times a year.

**Sara Wenger Shenk blog:** Join Sara Wenger Shenk in asking questions and engaging issues in the church. In her blog, Sara will “pose questions, test assumptions, resist labels, play with possibilities, experiment with integration, practice wholeness”:  
[www.ambs.edu/practicingreconciliation/](http://www.ambs.edu/practicingreconciliation/)

**Faculty notes:** Four AMBS faculty members completed advanced degrees last year: **Safwat Marzouk**, PhD, asst. professor of Old Testament; **Rachel Miller Jacobs**, DMin, asst. professor of congregational formation; **Andy Brubacher Kaethler**, PhD, asst. professor of Christian formation and culture; and **Allan Rudy-Froese**, PhD, asst. professor of Christian proclamation.

**Board members:** **Meghan Good** from Albany, Ore., serves on the board.

**Students:** One students from the conference studying at AMBS this year in the Master of Divinity Connect program: **Jennifer Carreto**.

**Discounts for seminary study:** People exploring seminary study can receive a **50 percent discount on tuition when they take a first online course** if they are not enrolled in a graduate theological program. See [www.ambs.edu/academics/Online-Courses.cfm](http://www.ambs.edu/academics/Online-Courses.cfm).

**Emphasis on creation care:** AMBS was invited to become a member of the Seminary Stewardship Alliance, an organization dedicated to connecting Christians with the biblical call to care for God’s creation. AMBS was affirmed for efforts such as restoring native plants on campus, constructing and refurbishing buildings according to green building standards, gardening, recycling and more.

### **Resources for all in the church**

**Anabaptist Short Courses:** online and non-credit; for people wanting to explore topics of Anabaptist faith and theology. Visit [www.ambs.edu](http://www.ambs.edu), select *Lifelong Learning*.

**Webinars:** [www.ambs.edu/churchleadershipcenter/index.cfm](http://www.ambs.edu/churchleadershipcenter/index.cfm) Topics this year included preaching, Jubilee for today and understanding Anabaptist approaches to scripture.

**Pastoral Studies Distance Education** is for people without bachelor’s degrees who are exploring ministry and wish to study while in their own congregations.

**Vision: A Journal for Church and Theology**, co-published with Canadian Mennonite University. Spring 2014 focuses on economics, edited by Gordon Zerbe:  
[www.mennovision.org](http://www.mennovision.org).

New book from the **Institute of Mennonite Studies** ([www.ambs.edu/IMS](http://www.ambs.edu/IMS)): **The History of Mennonite Youth Ministry: 1885–2005**, edited by Bob Yoder, exploring how Mennonites in North America have nurtured faith in youth.

*We thank God for your support and ask for your prayers as we continue to prepare leaders for mission, peacemaking and spiritual vitality in the church of Jesus Christ.*

---

Bethel College has been privileged to serve the Mennonite Church USA in a special way this year by hosting a number of significant meetings with implications for the broader church:

- A benefit concert for Mennonite Disaster Service that raised over \$5000 for MDS's continuing work in and around Oklahoma City.
- Hosting a Faith Mentoring conversation on our campus that involved all of the vice-presidents for student life and most of the campus pastors at all five U.S. Mennonite colleges.
- Co-sponsoring a highly successful symposium on "Engaging Our Sexual Culture" with the Western District Conference's Human Sexuality Discernment Committee, featuring presentations by Ted Swartz of Ted & Co. and Keith Graber Miller of Goshen College.
- Hosting another wonderful symposium, this one entitled "Mothering Mennonite," with accessible and interesting presentations by faculty members from almost all the Mennonite colleges and universities in both the US and Canada.
- Sponsoring the second in a series of Worship and the Arts symposia, made possible by an endowment established by the generosity of Rosella and Harold Duerksen and the Estate of Lucille Graber. This one again featured Thomas Long of Candler School of Theology at Emory University and John Ferguson of St. Olaf College. The focus this time was on death, dying, and the Christian funeral. It was a remarkably successful event, deeply appreciated, especially by pastors.
- This month the Constituency Leaders Council, as well as the Mennonite Education Agency Board, held meetings on the Bethel College campus. The former meeting was chaired by the moderator-elect of MC USA, Bethel College's own Dr. Patricia Shelly.

Add to that a very successful 24-Hour Prayer Event planned and hosted by our student chaplains, some powerful chapel services—not to mention a significant enrollment increase—and it has indeed been a very good year.

After thirty years at Bethel College, I have decided to retire at the close of this academic year. It has been a wonderful, meaningful, satisfying journey, and I thank all of you who have supported me throughout those thirty years. I have seen the list of applicants for my position and am confident that church relations and campus pastoring at Bethel will be in excellent hands when I am gone. God is indeed providing!

In gratitude for the prayers and good wishes of the Pacific Northwest Mennonite Conference, we humbly ask for your continued support.



## Report to Pacific Northwest Conference 2014

# Bluffton group aids tornado cleanup

While some college students migrated to Florida beaches for spring break, a group of Bluffton University students braved zero-degree temperatures in Illinois to serve others.

Members of Shining Through, Bluffton's music ministry team, spent a day sorting through snow-covered debris from a home destroyed by a November 2013 tornado in Washington, Ill.

Ashley Litwiller, a Bluffton junior and student coordinator of Shining Through, is an Illinois native who knew of the devastation the tornado had caused. "I knew that there was still some work to be done," she said.

She arranged for the group to aid in disaster relief while on its spring-break tour, during which the members performed worship music at churches in Illinois, Indiana and Ohio.

They faced an immediate weather-created obstacle after arriving at the home site. "As we started picking through the pile, we realized a lot of it was frozen together," Litwiller said.

Fortunately for the group, a good Samaritan stopped and offered assistance. "Turns out, the man was a neighbor and had a skid loader back at his house," she said. The man was able to break up the frozen rubble, allowing the group to move it more easily toward the street for pickup. "It was such a blessing," she added.

Shining Through's 2013-14 theme was "God's Love: Beyond All Measure," which drew on Ephesians 3:14-21 and focused on "being rooted and established in God's love," Litwiller said.

Although the tornado caused much destruction and heartbreak, she believes acts of service allowed the group to put God's love—which can handle anything, she said—in perspective.

She said, too, that times of tragedy are an opportunity for churches to reach out to those in need. "When something like this happens, God provides us with a community that will help support you through tough times," she said.

"It's not just family helping out family," Litwiller added. "If you are hurting or struggling, God's Kingdom will reach out to help you as Christians are called to do."

Stephen "Tig" Intagliata, campus pastor, traveled with the group's 11 student members. "They were really glad to give back to a community that suffered so much devastation," he said.

The combination of leading worship services and providing service—which was like "offering ourselves in God's service," he explained—was a good one, and "something we want to continue to do" on future tours, he added.

### Thank you, Pacific Northwest Conference!

Joshua Burkholder from Warden (Wash.) Mennonite Church is a senior at Bluffton. He has been involved in the chapel and Sunday Night Worship programs, and was supported by his church in 2013-14 with \$3,028 in church matching scholarship money.

For more information on Bluffton University:  
Robin Bowlus, director of public relations  
419-358-3453  
bowlusr@bluffton.edu  
www.bluffton.edu

### **New Faculty/Staff at EMS**

**Emily Peck-McClain**, an ordained UM minister, has been hired as assistant professor of Christian formation, preaching and worship at Eastern Mennonite Seminary. Peck-McClain said she is excited by the position “because it combines what I see as essential in the practical theology and practice of ministry fields. I can tell that formation is something the seminary community as a whole truly values.”

She is finishing her ThD through Duke Divinity School. Her dissertation “Revealing the Power: New Creation Epistemology for Adolescent Girls” is on reading Romans 1-8 as a liberative source for ministry with adolescent girls. She will begin at EMS in August, 2015.

### **2014 School for Leadership Training**

The January 20 - 22 event, titled “Discerning Together, Shaping the Future” offered pastors and church leaders the chance to engage this timely topic through speakers, case study presentations, workshops and worship sessions. The keynote speakers were Ervin Stutzman (executive director of MC-USA and author of “Discerning God’s Will Together”) and Ruth Haley Barton (noted speaker and author of “Pursuing God’s Will Together”). A record registration of 340 persons included participants from 19 states and 2 Canadian provinces. Worship resources from SLT can be found here:

<http://www.emu.edu/seminary/slt/archive/>

The 2015 School for Leadership Training, which will take place on January 19-21, will be focusing on the church’s interaction with the millennial generation. Save the date!

### **17 Graduated from EMS This Spring**

EMS awarded 11 degrees and 6 certificates on April 26 to the graduating class of 2014. The ceremony was held at 2:30 p.m. in Lehman Auditorium on the campus of Eastern Mennonite University in Harrisonburg, Va. Elizabeth Soto Albrecht was the commencement speaker.

### **2014-15 Distance Learning Courses**

EMS is offering the following courses online this year:

#### **Fall semester:**

- Dietrich Bonhoeffer: Life, Theology and Witness
- Mennonite History
- Psychology of Religious Experience

#### **Spring semester:**

- Interpreting the Biblical Text
- Mennonite Faith and Polity
- Old Testament: Text in Context

<http://www.emu.edu/seminary/distance-learning>

For more information contact the admissions office at [semadmiss@emu.edu](mailto:semadmiss@emu.edu) or call 540-432-4257.

### **Statement of Purpose**

*Eastern Mennonite Seminary prepares men and women to serve and lead in a global context. In response to God’s saving grace, we educate students to bear witness to the gospel of Jesus Christ in the power of God’s Spirit as wise interpreters, mature practitioners, discerning communicators, and transformational leaders.*

- **Loren Swartzendruber**, University president
- **Michael King**, Seminary dean
- **Phil Helmuth**, director of church relations
- **Laura Amstutz**, interim director of seminary admissions
- **Les Horning**, associate director of seminary development, admissions, and church relations

For the most up-to-date information on EMS, give us a call, visit us on the web, “Like” us on Facebook!

[www.emu.edu/seminary](http://www.emu.edu/seminary)

[540-432-4260](tel:540-432-4260)

**Well-known psychologist returns to EMU to discuss research on relationships and interdependence**

During a recent lecture at Eastern Mennonite University, [James Coan](#), PhD, demonstrated why his work has been widely featured in both the academic and popular presses. Coan, associate professor of clinical psychology and director of the Virginia Affective Neuroscience Laboratory at the University of Virginia, struck a playful yet serious tone while discussing his groundbreaking study of how relationships affect emotions.

At [EMU's 2011 Attachment Conference](#), Coan delivered a [keynote address](#) entitled "[The Social Regulation of Emotion](#)." That presentation was published as a chapter in the conference book, *Integrating the New Science of Love and a Spirituality of Peace: Becoming Human Again* (Cascade Books, 2013).

**Visiting speaker draws parallels between Christian 'shalom' and Native American values of harmony, balance**

The "harmony way" of Native Americans is a lot like the "shalom community" taught by Jesus, according to a seminary professor from Oregon who spoke at Eastern Mennonite University on March 12-13, 2014. [Randy Woodley](#), PhD, is a Cherokee Indian who has spent a lifetime studying the ways of his people as well as the teachings of Jesus.

"It may at first sound strange to you," he told students, faculty and others at an academic forum in the [Common Grounds Coffeehouse](#), "but the more I learned about Jesus the more he seemed like an Indian spiritual leader or a medicine man to me."

Woodley, professor of faith and culture at George Fox Seminary in Portland, OR, spoke at EMU's annual Augsburg Lecture Series on Christian evangelism and mission.

- **Loren Swartzendruber**, *president*
- **Phil Helmuth**, *director of church relations*
- **Tim Swartzendruber**, *associate director of church relations*
- **Jason Good**, *director of admissions*

(540) 432-4000    [www.emu.edu](http://www.emu.edu)  
[ChurchRelations@emu.edu](mailto:ChurchRelations@emu.edu)

**How can EMU be of service to your congregation and conference?**

Contact the church relations office to schedule and EMU student worship team in your congregation, as well as the president, dean or a faculty guest speaker. [ChurchRelations@emu.edu](mailto:ChurchRelations@emu.edu) or 540-432-4589.

**Our Vision**

*EMU envisions a learning community marked  
by academic excellence, creative expression,  
professional competence, and passionate  
Christian faith, offering  
healing and hope  
in our diverse world.  
To this end, we commit ourselves  
to do justice,  
love mercy and walk humbly with God.*



## Goshen College Report to Pacific Northwest Mennonite Conference, June 2014

---

### President opens year with message on Compassionate Peacemaking

Welcoming 828 undergraduates from more than 32 states and 36 countries, Goshen College President James E. Brenneman opened the new school year by encouraging students to take up the challenge of being compassionate peacemakers in all aspects of life. Understanding that peace is the manifestation of human compassion, Dr. Brenneman encouraged the gathered community to extend that compassion to all aspects of life. "I hope that at ... GC our understanding of the meaning of the core value, Compassionate Peacemaking, will be as deep and wide and fully human and wonderfully Divine as life itself is. And I hope that a spirit of compassionate peacemaking generously pervades even our attempts at defining its meaning."

### Conference connections

This past year Goshen College Parables worship ensemble presented their program "Where the River Will Never Run Dry" in 20 churches and other settings throughout the year. Rachel Mast, from Corvallis, was one of the 8 students who made up Parables this year. Other students from the PNMC took part in SST (Study Service Term), athletics, music and other leadership activities. PNMC has been well represented at Goshen College! Pacific Northwest Mennonite Conference nurtures and supports 8 students from 4 congregations who are enrolled at Goshen College for the 2013-2014 school year. Those churches have pledged \$14,000 in congregational student aid for the academic year. The Church Aid Matching Grant program provides a dollar-for-dollar match of the first \$1,000 per student and a 1:4 match after that, up to full tuition.

### Campus ministries theme

The Campus Ministries theme this year is "Sowing Compassion, Side by Side." Seven Worship Assistants along with twelve Ministry Leaders and countless other Goshen College students are providing leadership as we explore, in a variety of ways, what it means to sow compassion in the context of a community. During the first chapel of the year students reflected on how they hoped to sow compassion this year. Intentions included "Invite people over for meals," "I will show compassion by being more open minded and standing up for those with unpopular opinions," "smiling at strangers," "being a friend to those who need it," "compassion through simply loving and listening," "sowing compassion through music," "encouraging and praying for those around me," "learn more about myself through relationships with others and God," and "truly act for peace in relation to SOA and Syria." These are just a few of the hundreds of hopes that were articulated – and continue to be lived out - this year at Goshen College.



For more information, contact Gwen Gustafson-Zook, Minister of Worship and Church Relations. Call (574) 535-7563 or e-mail [churchrelations@goshen.edu](mailto:churchrelations@goshen.edu).



---

**PACIFIC NORTHWEST CONFERENCE OF MENNONITE CHURCH USA REPORT**  
March 2014

---

**2013-14 enrollment** – Official fall enrollment numbers for the year are 449 students from 32 states and 17 countries, including 64 new and returning international students who make up 14 percent of the total enrollment. Students from Kansas comprise 44 percent of the student population, with 42 percent coming from other states. **2014-15 enrollment** – Campus visits are running high for Fall '14, including the college's first Leaders and Academic Scholars weekend, attended by 40 students and their parents. We continue to emphasize the recruitment of students of all backgrounds whose parents are alumni.

**Campus theme** – The Hesston College campus-wide common read theme for 2013-14 is **"Extending Home: Stories of Migration and Transformation"** inspired by the common read book *Outcasts United: An American Town, a Refugee Team, and One Woman's Quest to Make a Difference* (Spiegel & Grau, 2009). Author Warren St. John, a journalist and former *New York Times* reporter, was on campus in September and shared about his research and the challenges and rewards of refugee resettlement and creating community in an atmosphere where people do not seem to have much in common.

**Homecoming 2013** – 500 Hesston College alumni and friends gathered on campus in September for A Hesston College Homecoming: A View from Everywhere with a special emphasis on nursing and holistic health. Nursing and health care alumni were featured in a Holistic Health Symposium. **Homecoming '14** will be Sept. 25-28 with the theme *Each Other's Light: A Multicultural Celebration*, focusing on the rich multicultural history of Hesston alumni from around the U.S. and the world.

**AVDS conference employs Heilsgeschichte** - The Heilsgeschichte timeline (The Salvation Story.) was a key part of presentations during the college's annual Anabaptist Vision and Discipleship Series conference Feb. 21 to 23 with the theme "Reading the Bible in an Instagram World." Using a condensed version of the well-known Biblical Literature curriculum, 190 participants explored the Bible's relevance in social media-heavy contemporary life. Learning and worship was enhanced by dramatic performances from Ted Swartz of Ted & Company TheatreWorks (Harrisonburg, Va.) and worship leader Jeremy Kempf (Glendale, Ariz).

**Congregational student aid** – Hesston College offers a match grant for scholarships provided by students' churches. During the 2012-13 year, 91 churches contributed \$241,713 in student scholarships to 148 recipients. Hesston College matched a total of \$149,229. The average church aid per student was \$1,633 while the average church-and-college aid per student was \$2,642. **If your congregation is interested in providing a scholarship program to support Mennonite higher education, contact the Church Relations Office at 866-437-7866.**

**Cultures Fair highlights multiculturalism** – International students provided a glimpse into their cultures during the annual Cultures Fair in February. Students prepared and served food and performed music from their countries while interacting and sharing about their cultures with their peers, faculty and staff. International students comprise 19 percent of dorming students and help expand all our students' world views through interaction.

Read these full stories and more at hesston.edu. For questions or more information, contact Dallas Stutzman, director of Alumni and Church Relations tollfree at 866-437-7866.

**2013-14 campus theme verse**

The Lord's Prayer  
Matthew 6:9-13 (Traditional)

**Pacific Northwest Conference of Mennonite Church USA  
Statistics and Connections**

**2013-2014 Academic Year Students—6**

**Congregational Student Aid**—3 congregations provided \$3,500 in tuition assistance for 6 students as of March 11, 2014.

**Unified and Designated Giving**—We are grateful for the financial support of conference churches to Mennonite colleges and Mennonite Education Agency through Unified and Designated Giving and for personal contributions given from individuals.

Howard Keim, President  
Dallas Stutzman, Director of Alumni and Church Relations  
Derek Yoder, Development Officer  
Carson Stutzman, Admissions Representative



---

## **NATIONAL ORGANIZATION REPORTS**

**Everence**

**Mennonite Church USA**

**Mennonite Church USA Constituency Leaders Council**

**Mennonite Disaster Service (MDS)**

**Mennonite Education Agency (MEA)**

**Mennonite Health Services (MHS) Alliance**

**MennoMedia**

**Mennonite Men**

**Mennonite Mission Network (MMN)**

---

# Seeking peace of mind

## *Everence 2014 report*

Pacific Northwest Mennonite Conference  
June 20-22, 2014

*Put things in order,  
listen to my  
appeal, agree with  
one another, live  
in peace; and the  
God of love and  
peace will be with  
you.*

2 Corinthians 13:11

When you and your congregation turn to Everence for help with your stewardship and financial matters, you're encouraging peace of mind through our planning and products. That's because your members are working with people they trust to focus on their best interests when it comes to cooperatively creating a plan and executing it. There are many ways you and Everence can help people find peace of mind, and you'll see a few of them in this report.

### **Sharing Fund helps people like Noah**

What does the Everence sharing fund do? Congregations see a need in their communities and decide to provide financial help. They ask Everence for Sharing Fund money to match their donations. The money is used for everyday living expenses or a specific need, such as the partnership of Noah and Dexter.



Noah's church helped his family add Dexter to the household, with assistance from the

Sharing Fund. Dexter is being trained to provide alerts if Noah's blood sugar drops to dangerous levels.

### **Making an impact**

Everence Association, Inc. now offers the Advantage Select High Impact Annuity, a fixed annuity with competitive rates. It's designed to help people achieve peace of mind as they secure income for retirement while making an impact on the world in the process. With the Advantage Select High Impact Annuity, you can be part of a larger effort to:

- Help emerging and socially engaged congregations grow their missions and ministries.
- Help nonprofit organizations make environmentally friendly improvements.
- Support community development needs across the country and around the world.

Call (800) 348-7468 or talk with your local Everence representative to learn more.

### **Finances change with life events**

Your financial situation likely will change when important life events occur. That's why Everence offers your congregation a new *Life Events Guide* and updated life event education on our website. Getting married, having a baby, going to college, retiring soon and getting started as a young adult are examples of these life events. Contact your Everence church relations representative about the guide or visit [everence.com/life-events/](http://everence.com/life-events/) for additional information.

### **Using this credit card supports missions**

Everence Federal Credit Union donated \$14,000 from its Rebate for Missions™ program in 2013 to Mennonite Disaster Service and Mennonite Mission Network. Everence members voted online to choose the recipients. Rebate for Missions™ is supported by the credit union's 10 percent tithe of income generated when people use their Visa credit cards. Credit union branches also distribute Rebate for Missions™ money in their own communities. Since the program started in 1995, Everence Federal Credit Union has provided more than \$300,000 in grants.

### **Found Faithful**

All that we have is a gift from God. A four-part worship series called *Found Faithful* can help us recommit ourselves to be wise and generous stewards of all that we have been given - the gift of time, the gift of talents and the gift of money and material goods. A scripture passage, sermon starter and children's lesson are included for each session. Visit [everence.com](http://everence.com) for more information.

### **Guidance for end of life planning**

Everence is putting together a curriculum to help people think and talk about important end-of-life issues. The information grew out of *Final Arrangements* and *Natural Dying* workshops developed by members of Akron (PA) Mennonite Church (pictured).



Issues include preparing a will, naming a medical power of attorney and talking with family members about your wishes. Peace of mind often comes from knowing that your wishes are understood and your family will know what to do when time comes. Learn more by contacting Beryl Jantzi, Everence Director of Stewardship Education, at [beryl.jantzi@everence.com](mailto:beryl.jantzi@everence.com) or (800) 442-7930.

### **A better way to explain church finances**

Does your congregation use a line-item or narrative budget when church leaders present financial information to your members? Many churches are finding that narrative budgets better describe how revenues and expenses relate to carrying out the congregation's mission. Find the *Congregational Stewardship Resource Manual* at [everence.com](http://everence.com) to see examples of each type of budget and learn about the most effective and least effective ways to report congregational finances.

### **Bringing investing and stewardship together**

What is shareholder advocacy? It's basically using your position as a shareholder, or part owner, in a company to push for improved corporate environmental, social and governance practices. Shareholder advocacy is part of the Everence stewardship investing philosophy of financial decision making. This philosophy is informed by faith convictions, and it balances social and financial considerations so people can find the peace of mind that comes from investing in companies they feel comfortable about. Learn more at [everence.com/Stewardshipinvesting/](http://everence.com/Stewardshipinvesting/)

### **Benefits of congregational endowments**

Setting up an endowment fund can help your congregation stretch its outreach. The fund is invested, with the earnings available for supporting your ministry. Everence Charitable Services can help make the endowment process easier for you. We'll help to educate and train your endowment commission - something few financial institutions offer. And your congregation's mission and values will be incorporated into the investment selection process. Visit [everence.com](http://everence.com) for details.

Everence offers credit union services that are federally insured by NCUA. Investments and other products are not NCUA or otherwise federally insured, may involve loss of principal and have no credit union guarantee. All products are not available in all states.



**MennoMedia**

An agency of Mennonite Church USA  
and Mennonite Church Canada

1251 Virginia Avenue  
Harrisonburg, VA 22802  
800-245-7894 (USA)  
800-631-6535 (Canada)  
info@MennoMedia.org  
www.MennoMedia.org

## 2014 Report

The big news this year for MennoMedia is the launching of our new Children's curriculum, *Shine: Living in God's Light*, a dynamic Sunday school curriculum for ages 3 through grade 8 that engages Christian communities in their life together. This is the first new curriculum created for children since the launch of the highly successful *Gather 'Round* in 2006. Specifically, *Shine*:

- Calls children to experience the transforming power of God's love.
- Nurtures trust in God and invites children to follow Jesus.
- Encourages imaginative, interactive biblical storytelling.
- Explores the meaning of the Bible within the gathered community.
- Cultivates the inner life of the Spirit through spiritual practices.
- Expresses faith through lives of compassionate peacemaking and service.
- Invites all ages to shine God's light in the world.

A pastor in Ontario recently spoke about the importance and need for children's curriculum that comes from the Anabaptist tradition:

Because these are the things I really value in curricula, I'm very excited to use the new children's curriculum from MennoMedia that will come out in fall 2014, and no, I'm not being paid to say this! It's called *Shine: Living in God's Light*. And I know it won't be perfect, no curriculum is. And I know I'll need to adapt, that's a given with any curriculum. We always need to remember that any curriculum is meant as a guide and a springboard and requires contextualization. But I know without a doubt that the beliefs of the writers will be clear. I know it will be Christocentric, I know it will value both the Hebrew and Christian Scriptures, it will be inclusive, rooted in peace and love, community, story, ritual and practice. I know that the most important ground work that needs to happen when writing curriculum will have been done, and done with integrity, making it possible for me to focus my attention on my own faith development, and the developing faith of the children in front of me. Because that's what good curriculum writers do, they do the ground work, so we have the tools we need to enter into sacred spaces together.

We are glad that we can serve Mennonite Churches and a wider North American audience with this curriculum.

Also available this spring, from Herald Press, are two wonderful books from some bestselling authors, Ervin Stutzman and Saloma Miller Furlong. In *Jacob's Choice*, Ervin uses historical fiction to tell the story of Jacob Hochstetler, his ancestor (and ancestor to nearly 100,000 people in North America) an early Amish settler, whose wife and daughter were murdered in an attack in 1757, and who was taken into captivity along with his sons. In *Bonnet Strings*, Saloma tells the story of her painful leaving of her Amish community in Ohio.

Please keep abreast of our vision and plans for the future via our new blog at [www.Mennobytes.com](http://www.Mennobytes.com).

Russ Eanes, Executive Director, MennoMedia, Harrisonburg, Virginia

**Herald Press • Third Way Media • Faith & Life Resources**



### Greetings to Pacific Northwest Mennonite Conference in the name of Jesus Christ!

For many years, I've regularly recorded in a journal the things for which I am grateful to God. This practice shapes my thinking and attitudes about the world around me. My heart wells with gratitude as I marvel at the countless ways in which I've seen God at work across Mennonite Church USA as I have worked with the national staff. In 2013, these included:

- The enthusiastic embrace across our church of the 12 Scriptures Project and Western District Conference's Year of the Bible initiative.
- The 85+ new fellowships/church plants in Mennonite Church USA over the last five years.
- The commitments and re-commitments to faith made by hundreds of youth and adults during worship together at our biennial convention in Phoenix in July.
- Learning trips to the Arizona-Mexico border during Phoenix 2013, where more than 300 Mennonites learned about the history and current realities of immigration in the United States through BorderLinks.
- The special offerings at Phoenix 2013 that raised more than \$40,000 for the DREAMer Fund (which offers grants to help young undocumented Mennonites apply for the Deferred Action for Childhood Arrivals program) and for the development of the new *Shine* Sunday school curriculum by MennoMedia.
- Revisions to our churchwide statement on immigration, and new statements signaling commitments to environmental justice and protecting and nurturing children and youth.
- The Women in Leadership Project, which provides resources and makes space for conversation about women's experiences in the church.
- The Mennonite Church USA Archives, which celebrate our rich Anabaptist history.
- Congregations across the country committed to undoing racism and growing in intercultural awareness and understanding.
- Connections made and new friendships forged during gatherings throughout the year, such as meetings of area conferences, the Constituency Leaders Council, Mennonite leaders of color, conference ministers, and convention.
- Relationships built with people from other denominations and communities across the country.
- The ministries of our churchwide agencies: mission, stewardship, education, health services and publishing.
- The ministries of our 21 area conferences and 900+ congregations, and of the 100,000+ Mennonites who are responding to God's call on their lives each day in their local communities.

**Your financial support is a crucial part of the partnership we share.** In the fiscal year that ended in July 2013, **your conference gave \$109,119 to the ministries** of the offices and churchwide agencies of Mennonite Church USA in the following ways:

1. through congregational offerings, which are forwarded directly or through your conference office;
2. through your conference office;
3. directly to a denominational office or agency.

*Unless designated otherwise, checks made out to "Mennonite Church USA" are divided according to the following formula: 66% to Mennonite Mission Network, 15% to Executive Board/Staff, 14% to Mennonite Education Agency, 3% to MennoMedia, and 2% to Racial/Ethnic Constituency Groups.*

I am grateful for the generosity of people like you who share your gifts with the broader church—through prayer, good counsel, volunteer work and financial support—making possible these ministries and more.

I invite your continued contributions to help Mennonite Church USA advance the goals outlined in the Purposeful Plan for 2013 through 2015: [www.mennoniteusa.org/purposeful-plan](http://www.mennoniteusa.org/purposeful-plan).

Thank you for your conference's commitment to the partnership we share in the gospel of Jesus Christ. May God bless your conference abundantly.

In Christ,

Ervin R. Stutzman, executive director, Mennonite Church USA  
[www.mennoniteusa.org](http://www.mennoniteusa.org), 866-866-2872



# MennoDisasterService

**God's faithfulness was manifested in countless situations this year through MDS.**

I see God's grace at work when I read reports from our disaster response sites. Long after MDS leaves a community, the volunteers are still remembered. In a recent letter from Karen Griffen of Julian, CA, (a recipient of an MDS-built home after her home was destroyed by wildfires) she writes: "[MDS volunteers] turned our nightmares into blessings....the world is a far better place because of your work. We love our Mennonite home and tell everyone who sees it the story of its creation. Thank you all for restoring our faith."

Significant weather events in 2013 where MDS volunteers turned "nightmares into blessings" include: February - Hattiesburg, MS, tornadoes; April - Illinois floods; May - Texas and Oklahoma tornadoes and floods in Alaska; June - Colorado and Arizona wildfires and Alberta floods; September - Colorado floods; November - Illinois and Indiana tornadoes. In addition to these disasters MDS continued to respond to the floods in Minot, ND, and Duluth, MN, wildfires in Bastrop, TX, and floods in and damage from Hurricane Sandy in New York and Maryland.

In 2013, 4,277 MDS volunteers worked 24,912 days, a value of \$4,412,413 (based on a volunteer rate of \$22.14/hour\*). Additional volunteers served in many Unit and Regional responses. If MDS would list this value on our financial statements as an expense, our overhead percentage would be under 12%. It is important to note that most all of our staffing at the project level is filled by volunteers.

"I know you are in the business of raising houses, but you also raised spirits, including mine," wrote one homeowner of Marseilles, IL. I pray that MDS will remain faithful to our mission in 2014 as we continue to "touch lives and nurture hope, faith and wholeness", as our Mission Statement conveys. In a culture where self-interest and self-absorption is high I believe service to others is a powerful antidote. Through service, new relationships are built and hope is restored. I pray that we may continue to minister as the hands and feet of Jesus; responding, rebuilding, and restoring.

Kevin King  
Executive Director

## 2013 AT A GLANCE

12 Binational Projects	
4,277	Volunteers
286	Long-term
3,692	Short-term
213	Summer Youth
86	RV
323	Clients Served

Clean ups	75
Minor repairs	175
Major Repairs	59
Houses rebuilt	14

*\*\*The estimated US national value of volunteer time for 2012 is \$22.14 per hour from [www.independentsector.org](http://www.independentsector.org)*



## Report to Pacific Northwest Mennonite Conference June 2014

For more information, visit [www.MennoniteEducation.org](http://www.MennoniteEducation.org)

### *Greetings* from the education agency of Mennonite Church USA!

Mennonite education is transforming lives and impacting the world. Mennonite Education Agency (MEA) partners with the church and the Mennonite educational institutions to pass on Anabaptist faith and values to the next generation. MEA provides leadership, guidance, support and collaboration to enhance the relationship among the schools and the schools and the church. MEA houses the Hispanic Pastoral Leadership Education office which provides Spanish language based Biblical Anabaptist leadership training to Hispanic Mennonites through the Instituto Bíblico Anabautista (IBA) and Seminario Bíblico Anabautista Hispano (SeBAH), programs. To learn more, visit [www.MennoniteEducation.org](http://www.MennoniteEducation.org).

### *Thank you* Pacific Northwest Mennonite Conference for your generous gifts to Mennonite education!

MEA believes in the transforming power of Mennonite education in the lives of individuals. Your gifts help support this work.

### **Giving\* from Pacific Northwest Mennonite Conference congregations:**

July 1, 2012 – June 30, 2013 - \$14,722.33

*\*Includes gifts for higher education, MEA and Racial/Ethnic Leadership Education.*

### *We are grateful* to those serving on Mennonite education boards and committees:

- **AMBS:** Meghan Good, Albany
- **Bethel College:** Roberta Franz Hodgson and Warren G. Gering, Menno
- **Western Mennonite School:** Linda Dibble and Meghan Good, Albany; Eric Martin and Audra Stauffer, Salem; Cherri Barnhart and Rick Troyer, Western; Wanda Rohrer-Heyerly, Jerry Roth and Stan Oyer, Zion
- **MEA Board:** Linwood Rush, Portland; Judy Miller, Warden
- **MEA Investment Committee:** Lowell Herr, Portland

*We regret any omissions or errors. Please send corrections to [info@MennoniteEducation.org](mailto:info@MennoniteEducation.org).*

### A few milestones for the 2013-2014 school year

- 13,932 students are enrolled in Mennonite institutions from preschool to seminary
- MEA continues to facilitate collaboration among the five colleges/universities and two seminaries and 33 PreK-12 Mennonite School Council schools
- Bluffton University, Eastern Mennonite University, and Goshen College are moving forward with a collaborative MBA program
- Twenty-one schools participate in the MEA managed investment committee
- MEA produces the Youth Census report showing the number of Mennonite youth ages birth-college and serves as a valuable tool for Mennonite educational institutions
- 277 students are enrolled in the IBA and SeBAH Mennonite Hispanic leadership programs
- 135 pastors participated in the Mennonite Early Childhood Network survey providing feedback on early childhood resources to the church.
- Mennonite Learning Network (MLN) and Anabaptist Learning Institute (ALI) is providing online classes for teachers to receive graduate credit and certification as an Anabaptist educator ensuring our students receive excellent Anabaptist education.
- A new accreditation protocol for use in the Mennonite elementary and secondary schools is underway.

### **Connecting with Mennonite education**

☐ Enhance your teaching skills to become a certified Anabaptist educator by taking courses in the Anabaptist Learning Institute online.

<http://www.mennoniteeducation.org/ali>

☐ Pray for Mennonite education using specific prayer requests in **Prayers for Faith and Learning**. E-mail for a free subscription: [subscribe@MennoniteEducation.org](mailto:subscribe@MennoniteEducation.org).

☐ Encourage parents and teachers working with preschoolers to join the **Mennonite Early Childhood Network** to access Anabaptist-related and age-appropriate resources at [www.MennoniteEducation.org/MECN](http://www.MennoniteEducation.org/MECN).



***REPORT TO  
PACIFIC NORTHWEST CONFERENCE  
June 2014***

Mennonite Men, an organization of the Mennonite Church, is a jointly owned partnership of Mennonite Church USA and Mennonite Church Canada. It is an organization that aims to provide an Anabaptist perspective on manhood that speaks to current issues.

The priorities of Mennonite Men are three fold: to help men develop fellowship groups, to develop spiritual resources for men, and to raise funds to help young congregations build or purchase their first meeting house through the JoinHands Church Grant Program. A board of twelve regionally chosen members meets annually to manage the work of Mennonite Men.

A collection of resources is available to congregations wanting assistance with beginning local men's groups. Profiles of active men's groups are being gathered with contacts for local leaders willing to help with the initial work of organizing a men's group. Use [mm@mennonitemen.org](mailto:mm@mennonitemen.org) or contact your conference resource advocate for specific information. Also use the email to report on activities of your men's group.

In 2010, a book on men's spirituality was authored by Gareth Brandt titled *Under Construction*. It was made possible through the support of Mennonite Men is available from MennoMedia. In the intervening years Mennonite Men and Brandt have teamed up to do a number of workshops and retreats for men across Canada and the US.

In 2013 Don Yoder, coordinator for Mennonite Men, participated in the planning for a men's retreat hosted at Camp Friedenswald with Brandt as speaker. The planning materials are available for other camps and retreat centers hosting men's retreats. Yoder works out of the Mennonite Men office located in the MennoMedia building in Harrisonburg, VA.

JoinHands, the service component of Mennonite Men has given more than \$1.7 million to 61 congregations since 1985. Two grants were given in 2013. Tinsae Kristos Evangelical Church in Lancaster received a grant in March; the Albuquerque Mennonite Church received its grant in December. The next grant will go the Rey de Gloria church in Brownsville, TX. Mennonite Men enlists individuals and groups willing to commit themselves to contribute \$100 twice annually to support church grants to new congregations building their first meeting house.

Your regional contact person for Mennonite Men is Todd Lehman, 333 Hollyhock Place N Keizer, OR 97303. Email [coricancha.ev@gmail.com](mailto:coricancha.ev@gmail.com).

Check our website for information and resources. [www.mennonitemen.org](http://www.mennonitemen.org)



**Pacific Northwest Mennonite Conference**  
of Mennonite Church USA

# Be salt. Be light. **Be the Gospel.**

"You are the salt of the earth ...  
you are the light of the world ....  
In the same way, let your  
light shine before others,  
so that they may see your good  
works and give glory to your  
Father in heaven."

—Mark 5:13a, 14a, 16 NIV



**T**hanks to Pacific Northwest Mennonite Conference congregations for partnering in God's mission with Mennonite Mission Network. By working together, people around the world experience Christ's light and love. We are deeply grateful for your enthusiasm for God's mission! Your prayers, people, time, and contributions are an important part in sharing the gospel. We

are thankful for your partnership, and consider it an honor to extend the missional reach of Pacific Northwest Conference and its congregations.

*Stanley W. Green*

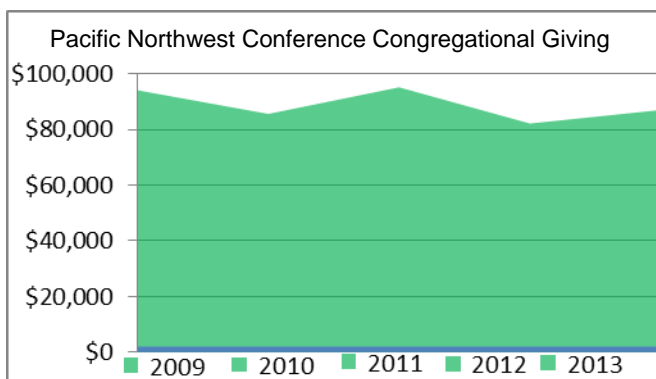
**Stanley W. Green**  
Executive Director  
Mennonite Mission Network

## Pacific Northwest Mennonite Conference in mission

Reflecting over the past calendar year, Mennonite Mission Network celebrates the ways that we and Pacific Northwest Conference have worked together to share Christ's light.

- Three individuals are serving in Mennonite Voluntary Service, three individuals participated in Service Adventure, and six people shared their skills in the SOOP program.
- Pacific Northwest Conference hosts two Service Adventure units, Albany and Anchorage; one MVS unit in Seattle; and four SOOP sites
- Twenty-one prayer partners pray daily for Mennonite Mission Network.
- Ten congregations contributed a total of \$3,028 to Mission Network's globe mission bank projects.
- Four congregations support specific Mission Network mission worker families: Albany Mennonite, Salem Mennonite, Western Mennonite, and Mountain View Mennonite churches

**Thank you for your continued partnership in God's mission!**



**Steve Wiebe-Johnson**  
Pacific  
Northwest  
Mennonite  
Conference  
Liaison

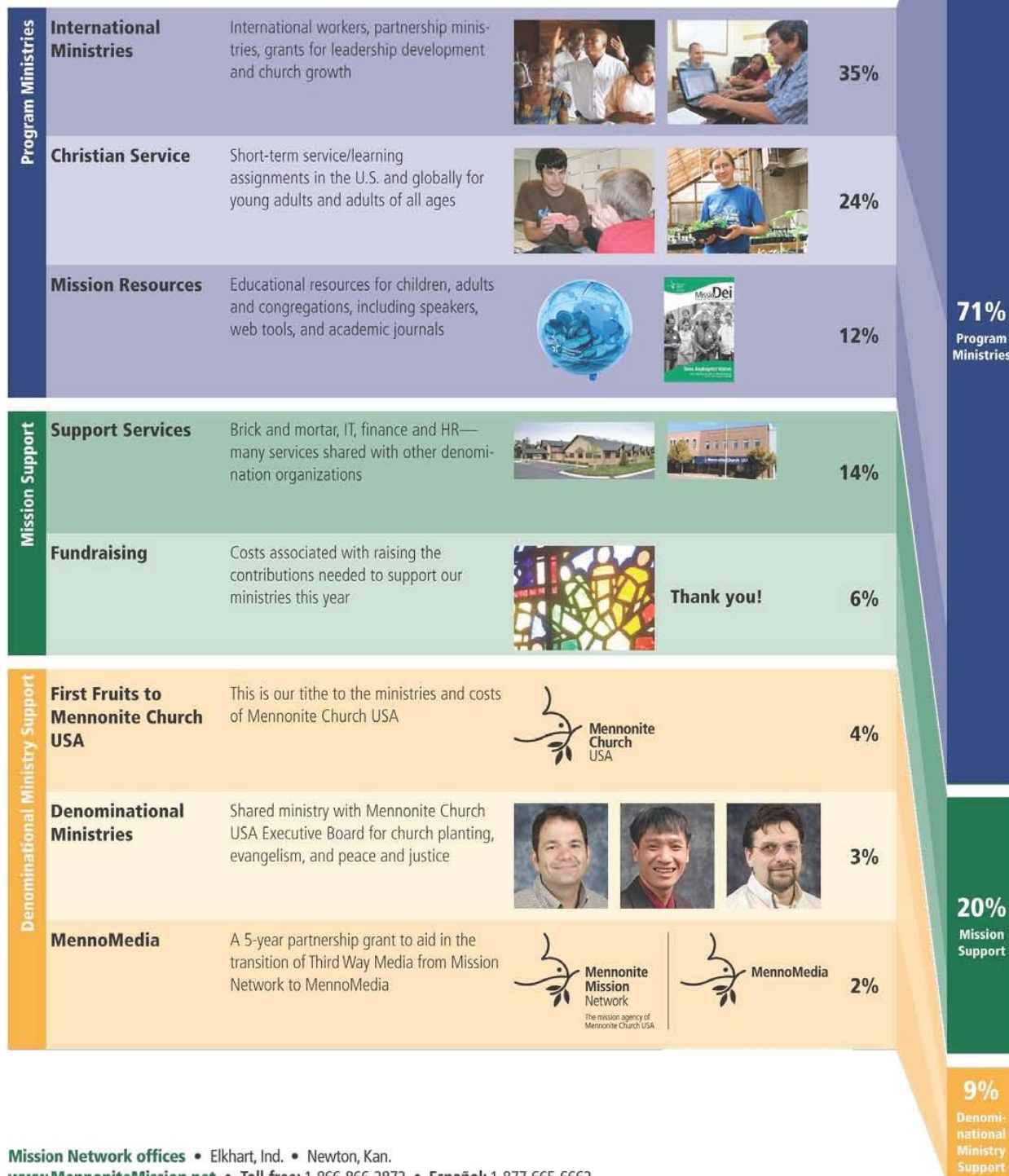
### A blessing

Greetings Friends,  
May God bless each one of you as you seek to be faithful to the work to which you have been called. Thank you for the good work that you are doing, and for your collaboration with and support of Mennonite Mission Network.

Grace and peace,  
Steve Wiebe-Johnson

# Spending Plan 2012–2013

\$8,830,998



**Mission Network offices** • Elkhart, Ind. • Newton, Kan.  
[www.MennoniteMission.net](http://www.MennoniteMission.net) • Toll-free: 1-866-866-2872 • Español: 1-877-665-6662



## **Vision: Healing & Hope**

*God calls us to be followers of Jesus Christ and, by the power of the Holy Spirit, to grow as communities of grace, joy and peace, so that God's healing and hope flow through us to the world.*

### **Pacific Northwest Mennonite Conference Mission Statement**

**P***romote personal spiritual development*

**N***urture healthy congregations*

**M***ake strong connections throughout the conference*



**Pacific Northwest  
Mennonite  
Conference**

PO Box 301036, Portland, OR 97294  
(888) 492-4216

[office@pnmc.org](mailto:office@pnmc.org) [www.pnmc.org](http://www.pnmc.org)